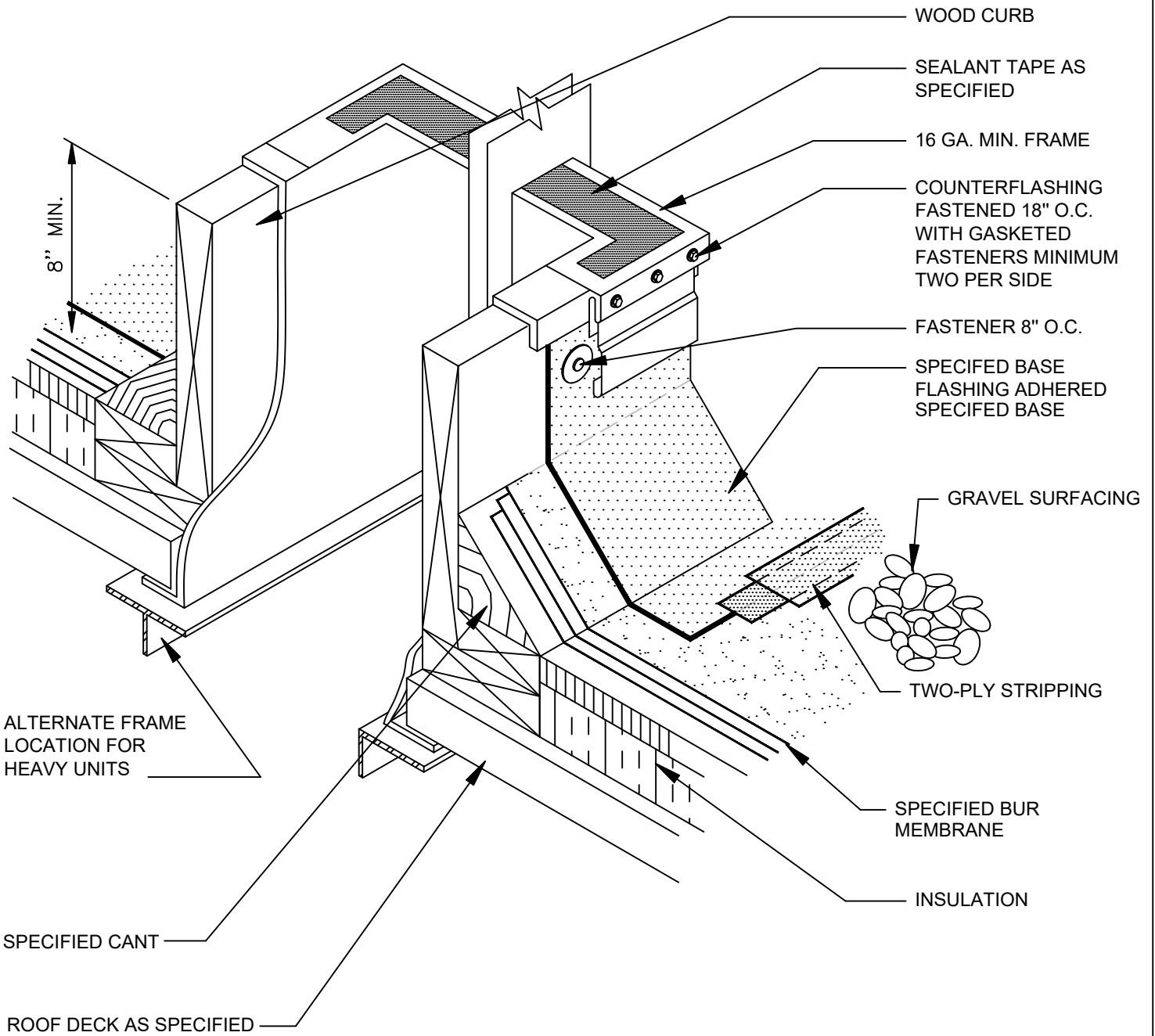


BUILT-UP ROOFING  
HOT/COLD BASE FLASHING AREA DIVIDER

DWG NO. 01

N.T.S.

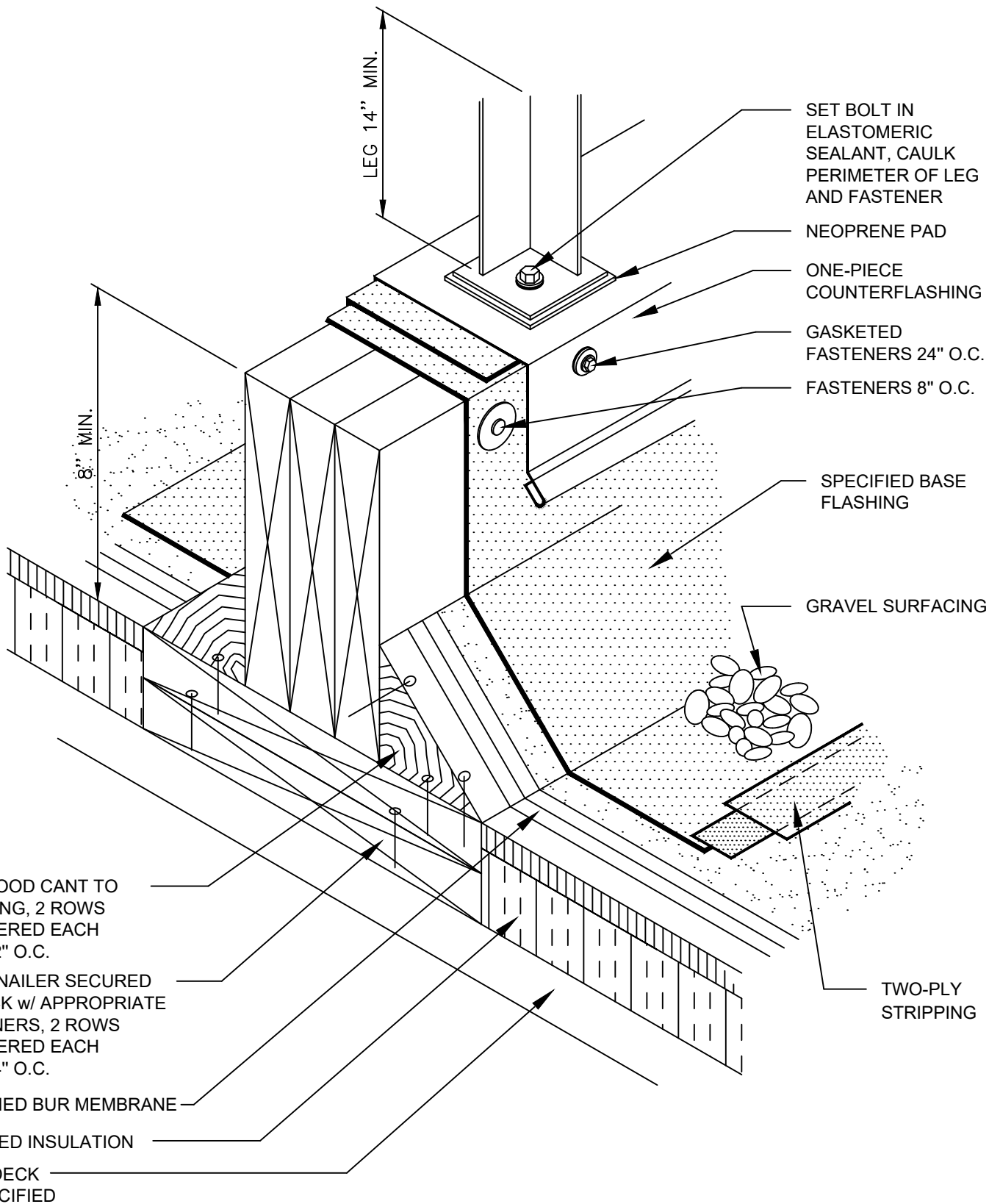




BUILT-UP ROOFING  
 HOT/COLD BASE FLASHING  
 CURB FOR AIR HANDLING UNIT  
 DWG NO. 03

N.T.S.

**TREMCO**  
 ROOFING & BUILDING MAINTENANCE



LEG 14" MIN.

8" MIN.

SET BOLT IN ELASTOMERIC SEALANT, CAULK PERIMETER OF LEG AND FASTENER

NEOPRENE PAD

ONE-PIECE COUNTERFLASHING

GASKETED FASTENERS 24" O.C.

FASTENERS 8" O.C.

SPECIFIED BASE FLASHING

GRAVEL SURFACING

TWO-PLY STRIPPING

NAIL WOOD CANT TO BLOCKING, 2 ROWS STAGGERED EACH ROW 12" O.C.

WOOD NAILER SECURED TO DECK w/ APPROPRIATE FASTENERS, 2 ROWS STAGGERED EACH ROW 24" O.C.

SPECIFIED BUR MEMBRANE

SPECIFIED INSULATION

ROOF DECK AS SPECIFIED

**BUILT-UP ROOFING HOT/COLD BASE FLASHING EQUIPMENT CURB SUPPORT**

DWG NO. 04

N.T.S.



FLEXIBLE IMPERVIOUS  
MEMBRANE ADHERED TO  
VAPOR RETARDER

FLEXIBLE VAPOR  
RETARDER TO SERVE  
AS INSULATION RETAINER

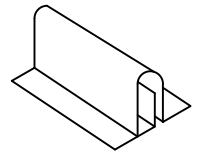
CHAMFER EACH  
SIDE OF WOOD  
CURB TO DRAIN

8" MIN.

INORGANIC  
COMPRESSIBLE  
INSULATION

WOOD NAILER SECURED  
TO DECK w/ APPROPRIATE  
FASTENERS, 2 ROWS  
STAGGERED EACH  
ROW 24" O.C.

NAIL WOOD CANT TO  
BLOCKING, 2 ROWS  
STAGGERED EACH  
ROW 12" O.C.



SECTION A-A

TURN ENDS DOWN  
45° ANGLE  
FASTENERS 8" O.C.  
BOTH SIDES

FASTEN 18" O.C. w/  
NEOPRENE GASKETED  
FASTENERS

SEAL

SPECIFIED BASE  
FLASHING

GRAVEL  
SURFACING

TWO-PLY  
STRIPPING

SPECIFIED BUR  
MEMBRANE

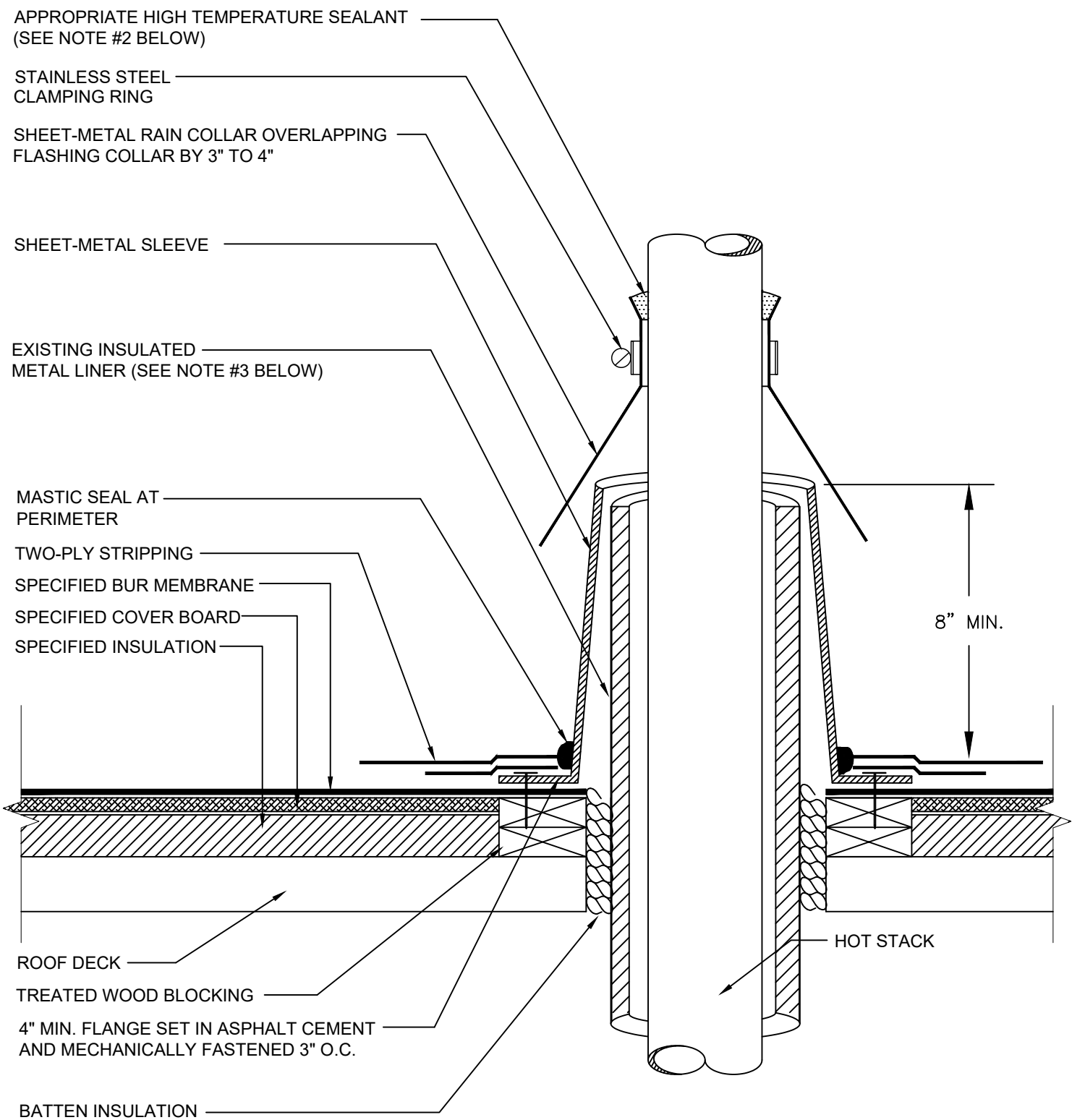
INSULATION

ROOF DECK  
AS SPECIFIED

BUILT-UP ROOFING  
HOT/COLD STANDING SEAM EXPANSION JOINT  
DWG NO. 05

N.T.S.

**TREMCO**  
ROOFING & BUILDING MAINTENANCE



## NOTES

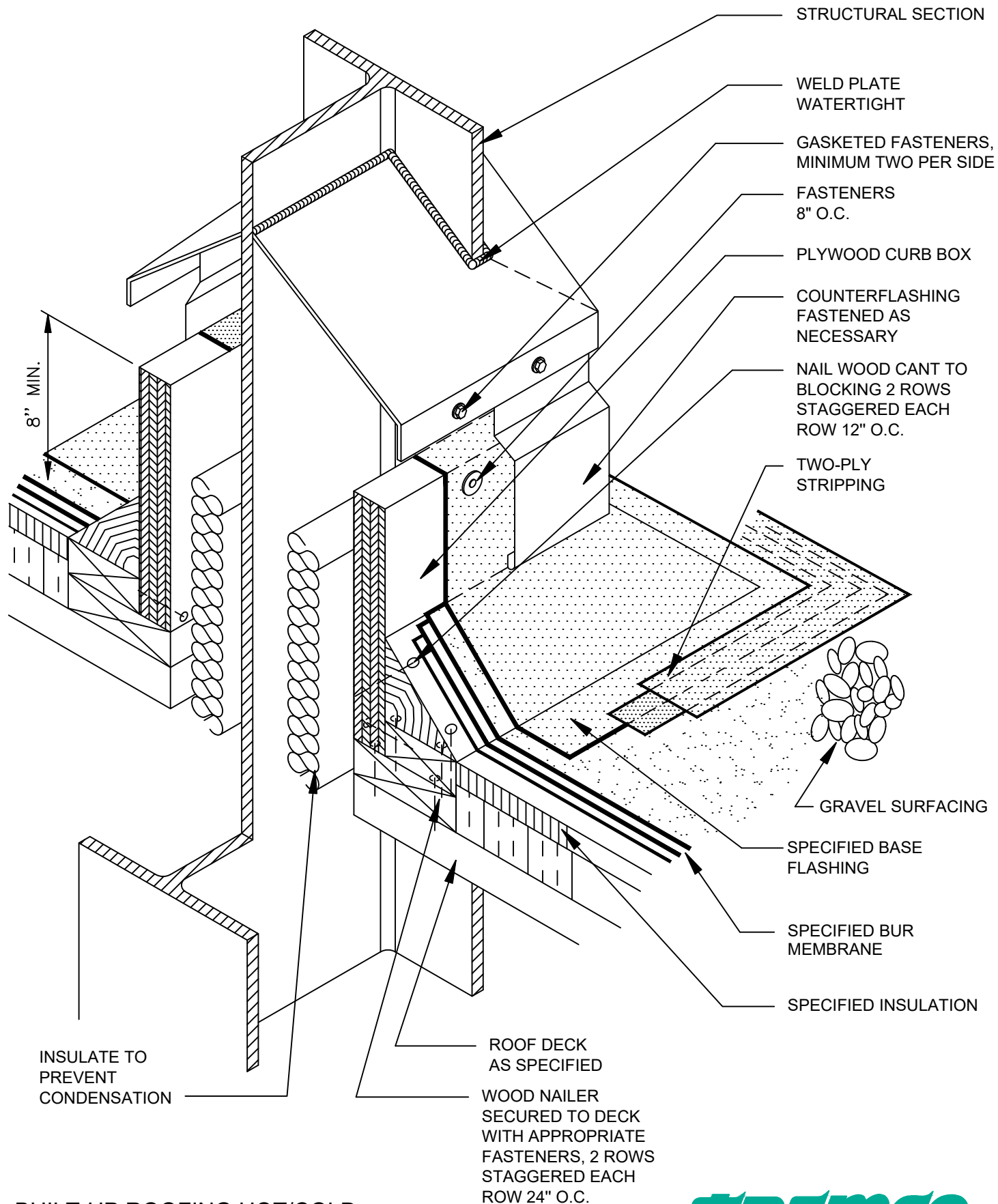
1. PRIME ALL METAL SURFACES THAT WILL COME INTO CONTACT WITH THE SPECIFIED ADHESIVE.
2. WHEN HOT STACK SERVICE TEMPERATURE EXCEEDS 400 DEGREES, WELD OR SOLDER RAIN COLLAR TO PIPE IN LIEU OF INSTALLING SEALANT.
3. THE CLEARANCE REQUIRED BETWEEN THE HOT PIPE AND INSULATED METAL LINER WILL DEPEND ON THE TEMPERATURE OF THE MATERIAL HANDLED BY THE STACK.

BUILT-UP ROOFING HOT/COLD  
HOT STACK PENETRATION

DWG NO. 07

N.T.S.

**TREMCO**  
ROOFING & BUILDING MAINTENANCE



STRUCTURAL SECTION

WELD PLATE  
WATERTIGHT

GASKETED FASTENERS,  
MINIMUM TWO PER SIDE

FASTENERS  
8" O.C.

PLYWOOD CURB BOX

COUNTERFLASHING  
FASTENED AS  
NECESSARY

NAIL WOOD CANT TO  
BLOCKING 2 ROWS  
STAGGERED EACH  
ROW 12" O.C.

TWO-PLY  
STRIPPING

GRAVEL SURFACING

SPECIFIED BASE  
FLASHING

SPECIFIED BUR  
MEMBRANE

SPECIFIED INSULATION

8" MIN.

INSULATE TO  
PREVENT  
CONDENSATION

ROOF DECK  
AS SPECIFIED

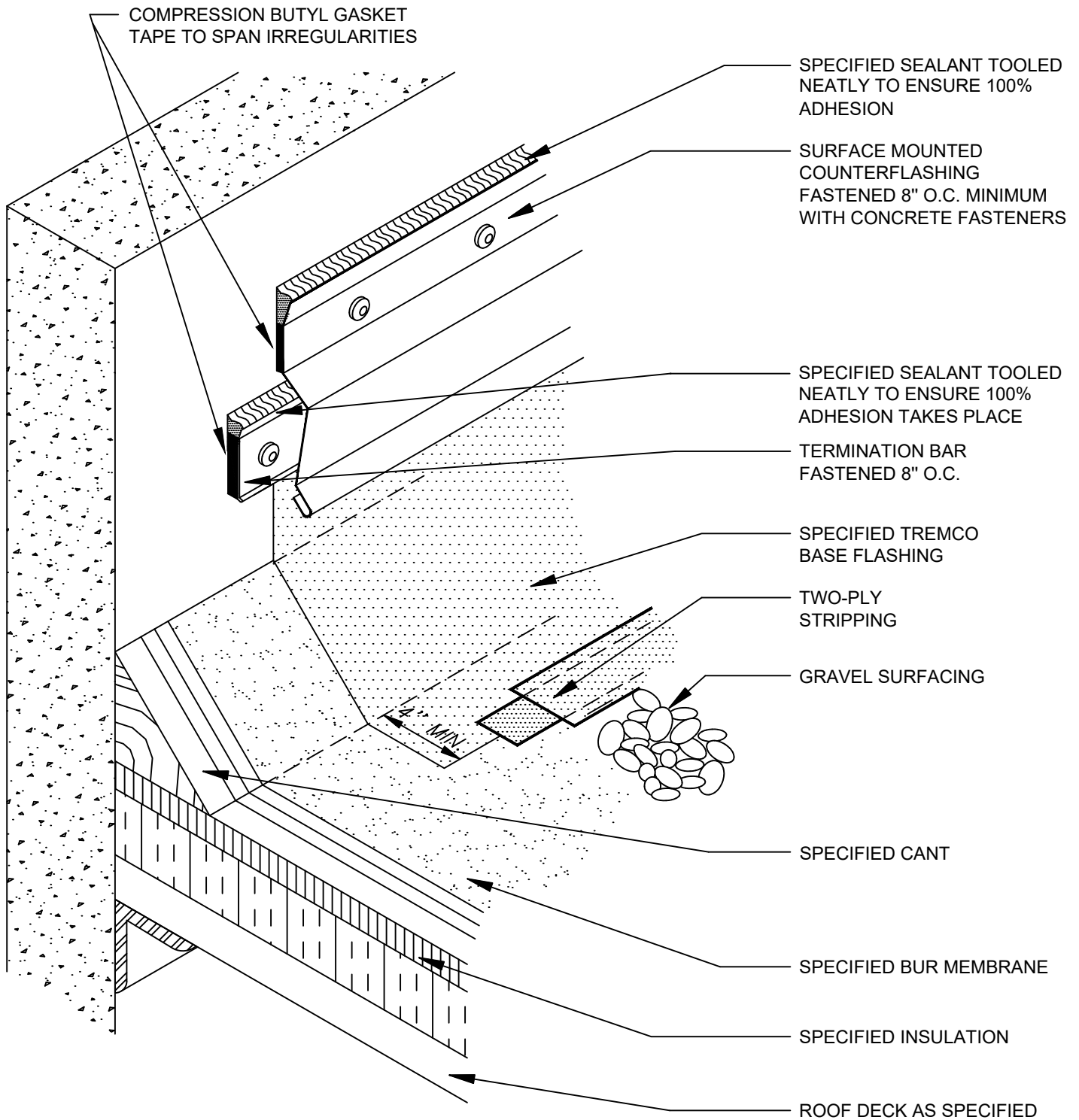
WOOD NAILER  
SECURED TO DECK  
WITH APPROPRIATE  
FASTENERS, 2 ROWS  
STAGGERED EACH  
ROW 24" O.C.

**BUILT-UP ROOFING HOT/COLD  
I-BEAM FLASHING**

DWG NO. 09

N.T.S.



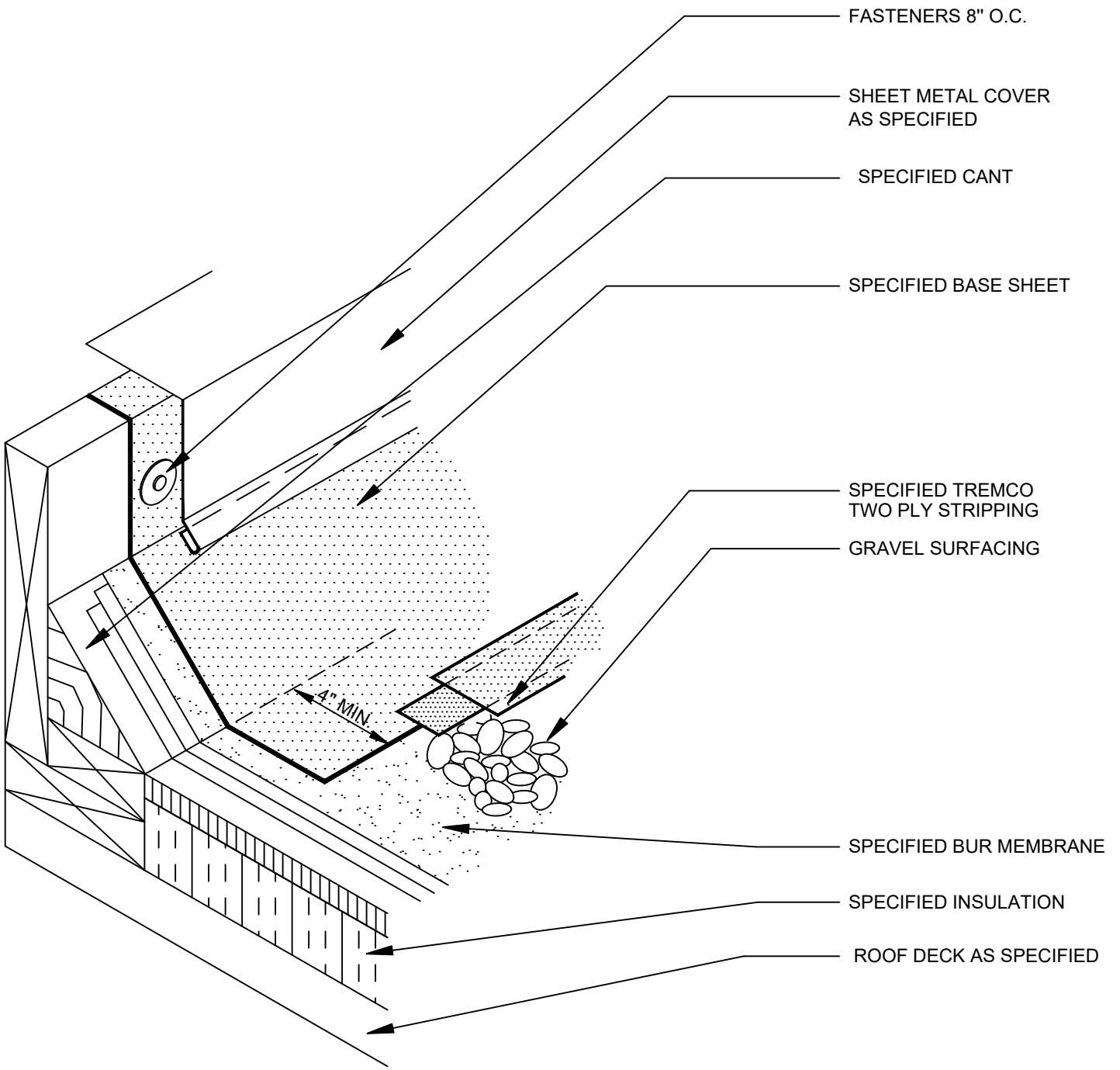


BUILT-UP ROOFING  
HOT/COLD WALL FLASHING FOR  
CONCRETE WALLS AND PARAPETS

DWG NO. 12

N.T.S.



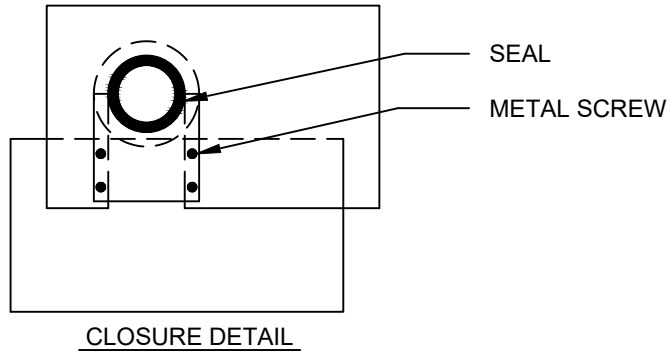


BUILT-UP ROOFING  
 HOT/COLD WOOD CURB  
 DWG NO. 17

N.T.S.

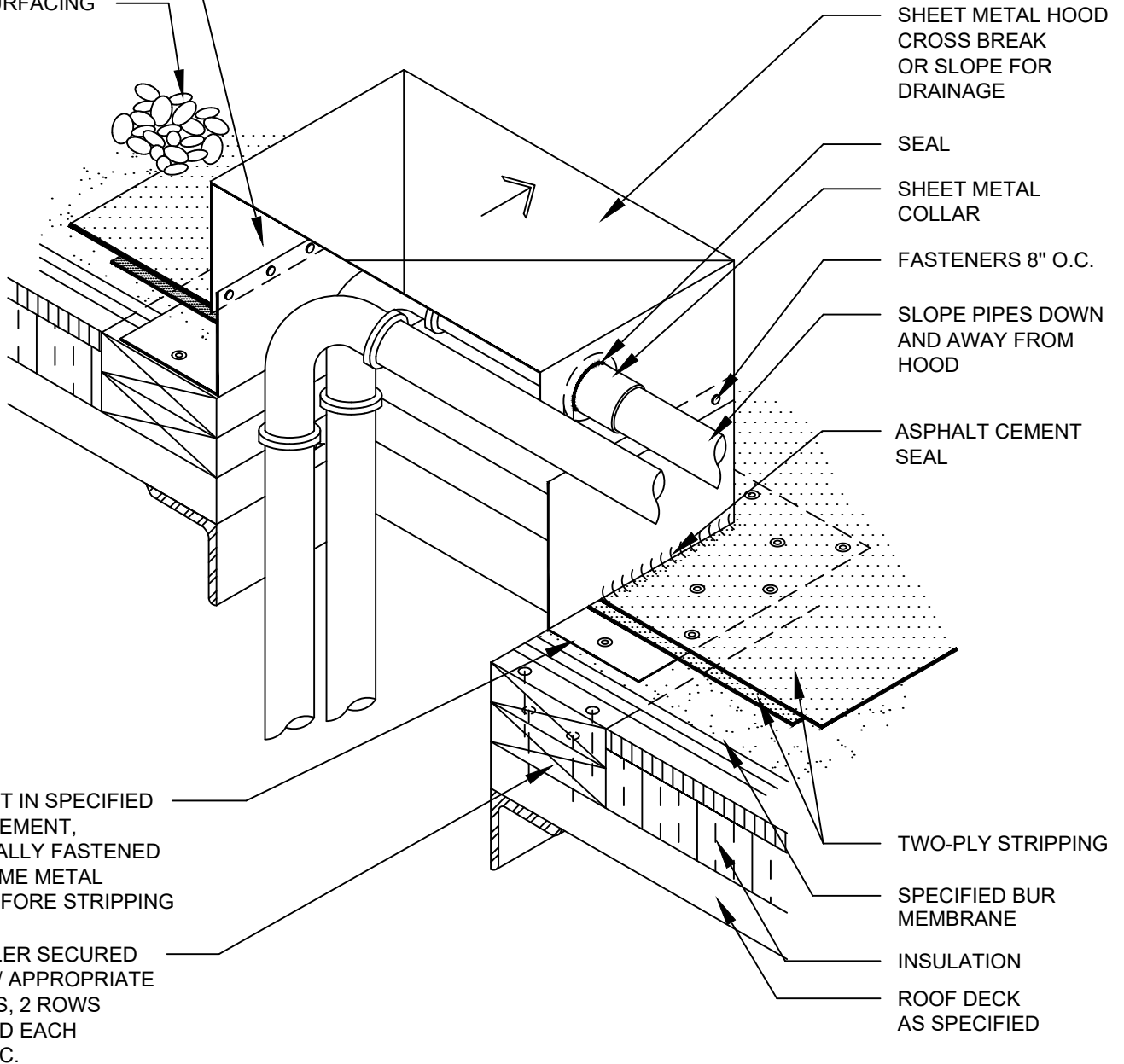
**TREMCO**  
 ROOFING & BUILDING MAINTENANCE





INSULATE INSIDE OF METAL WORK IN COLD CLIMATES

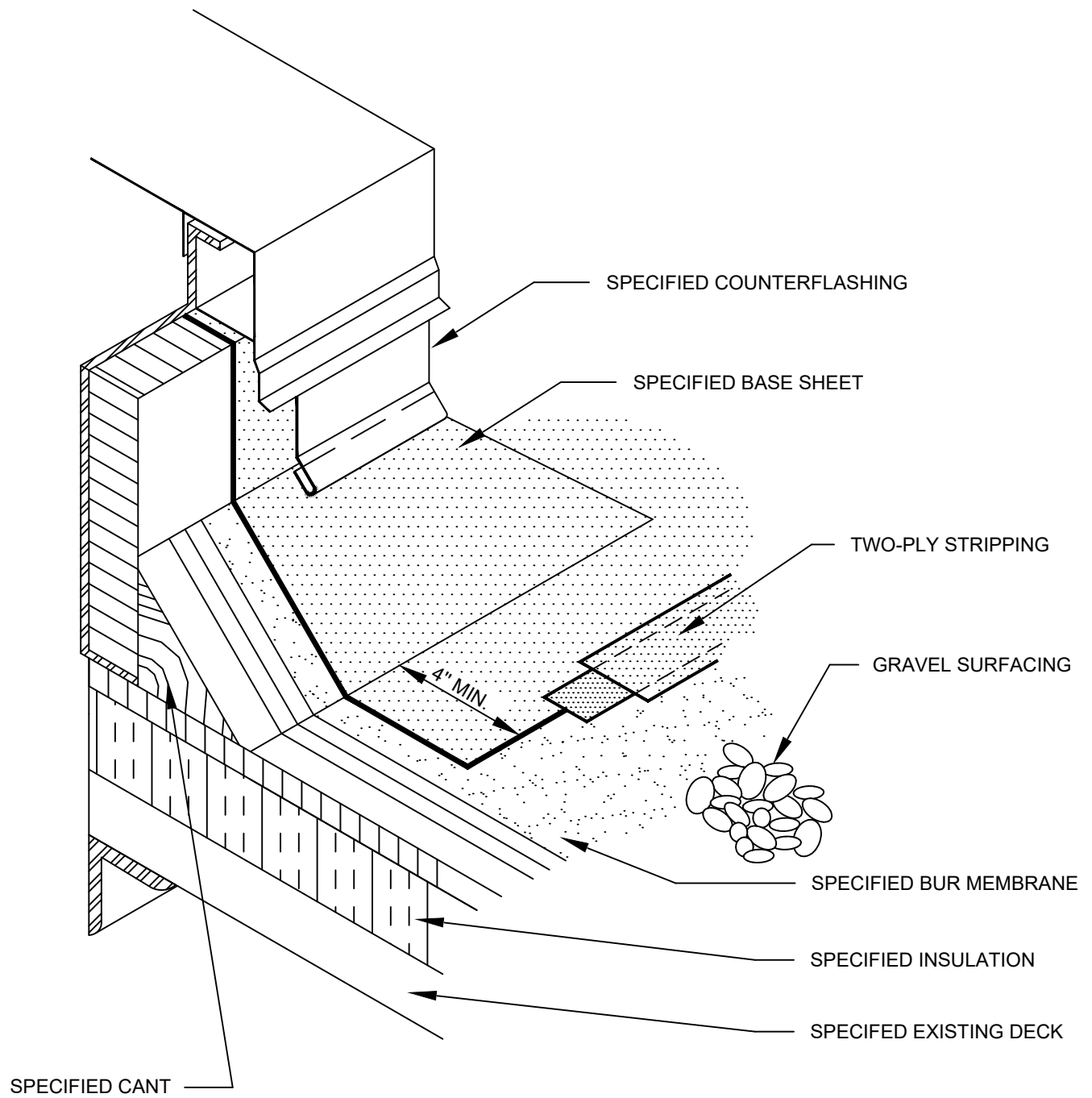
GRAVEL SURFACING



BUILT UP ROOFING  
HOT/COLD PIPING THROUGH ROOF DECK  
DWG NO. 18

N.T.S.

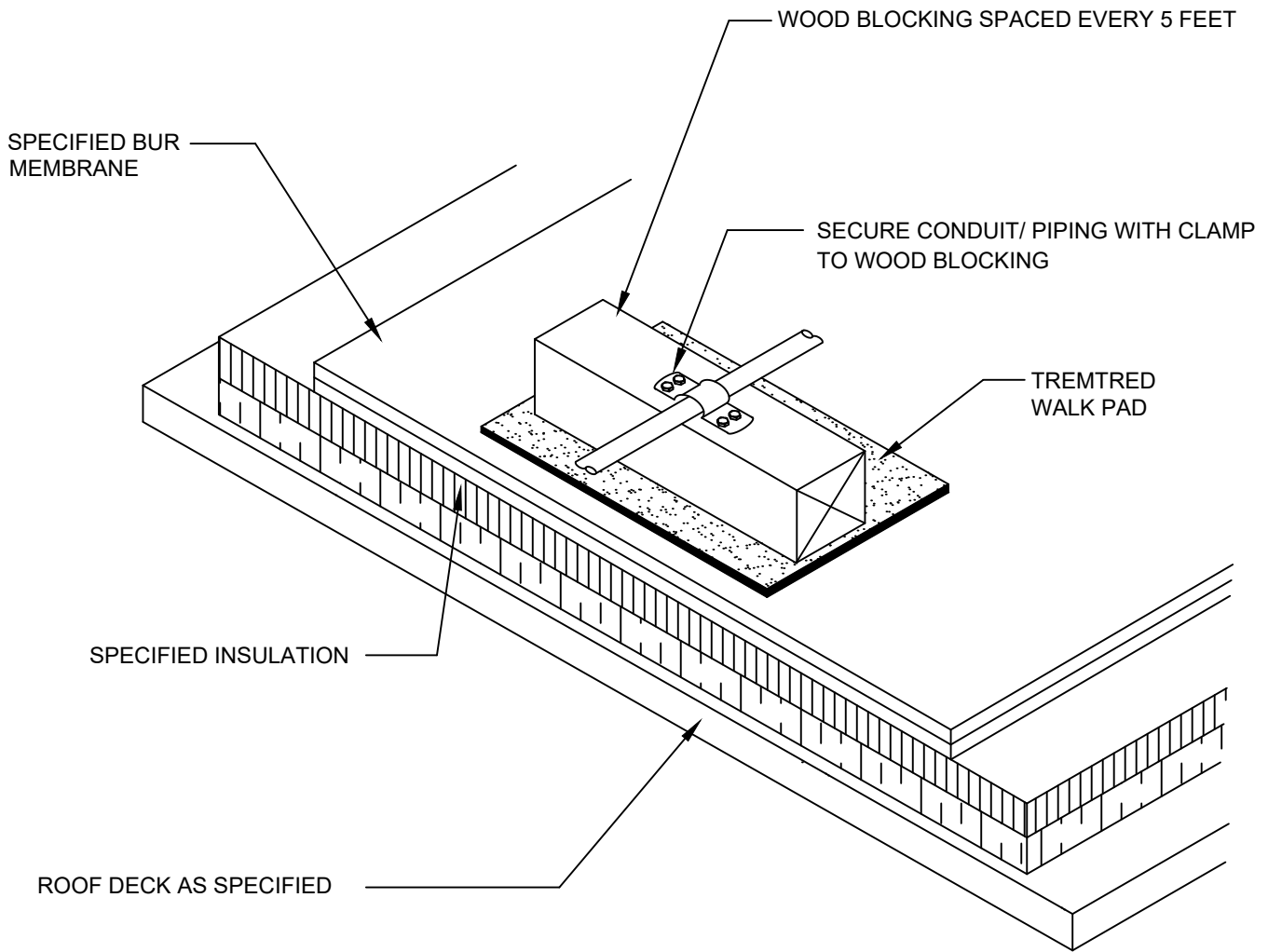




BUILT UP ROOFING  
HOT/COLD ROOF HATCH  
DWG NO. 25

N.T.S.

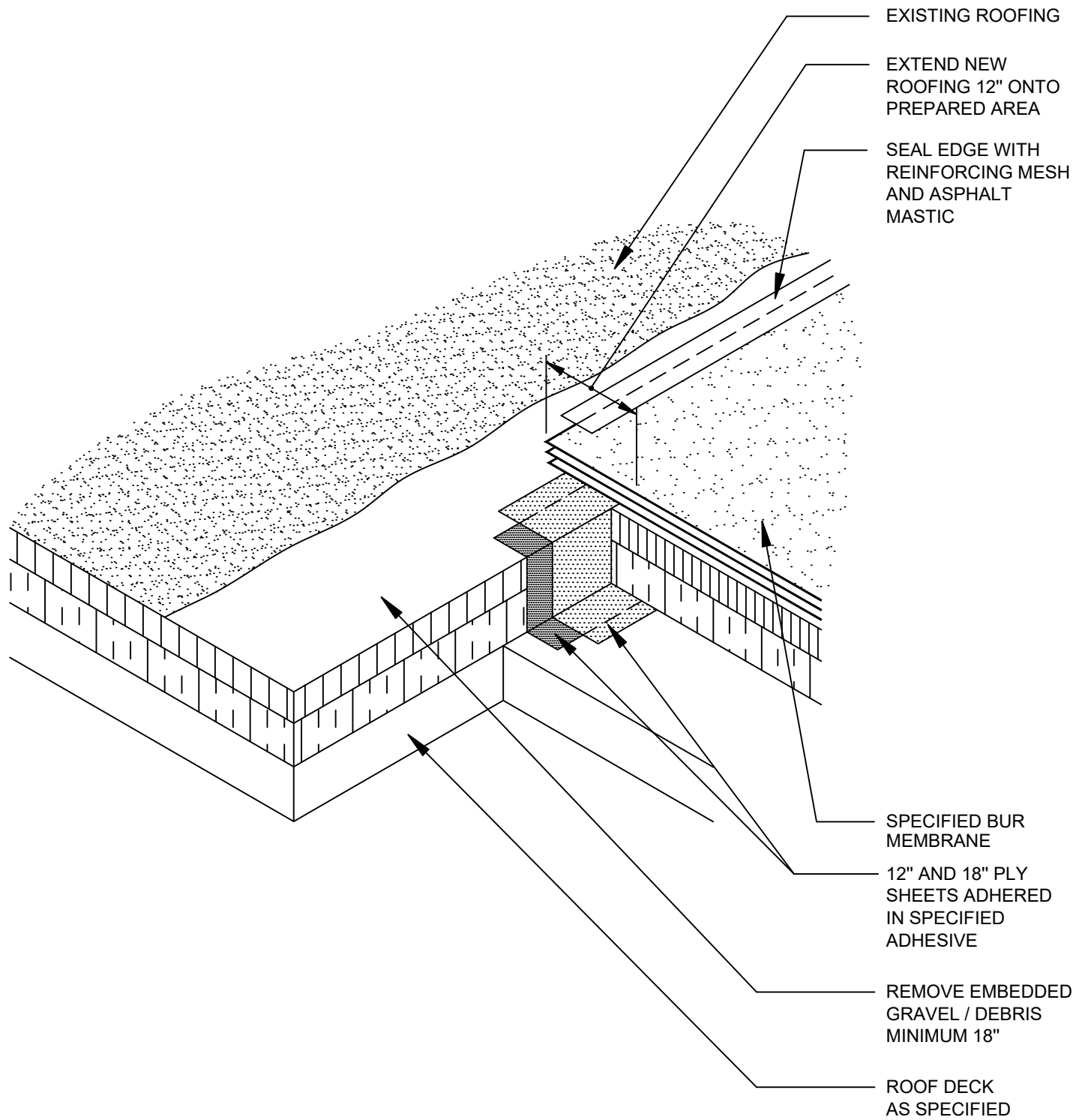
**TREMCO**  
ROOFING & BUILDING MAINTENANCE



BUILT UP ROOFING  
 HOT/COLD CONDUIT OR PIPING SUPPORT  
 DWG NO. 28

N.T.S.

**TREMCO**  
 ROOFING & BUILDING MAINTENANCE



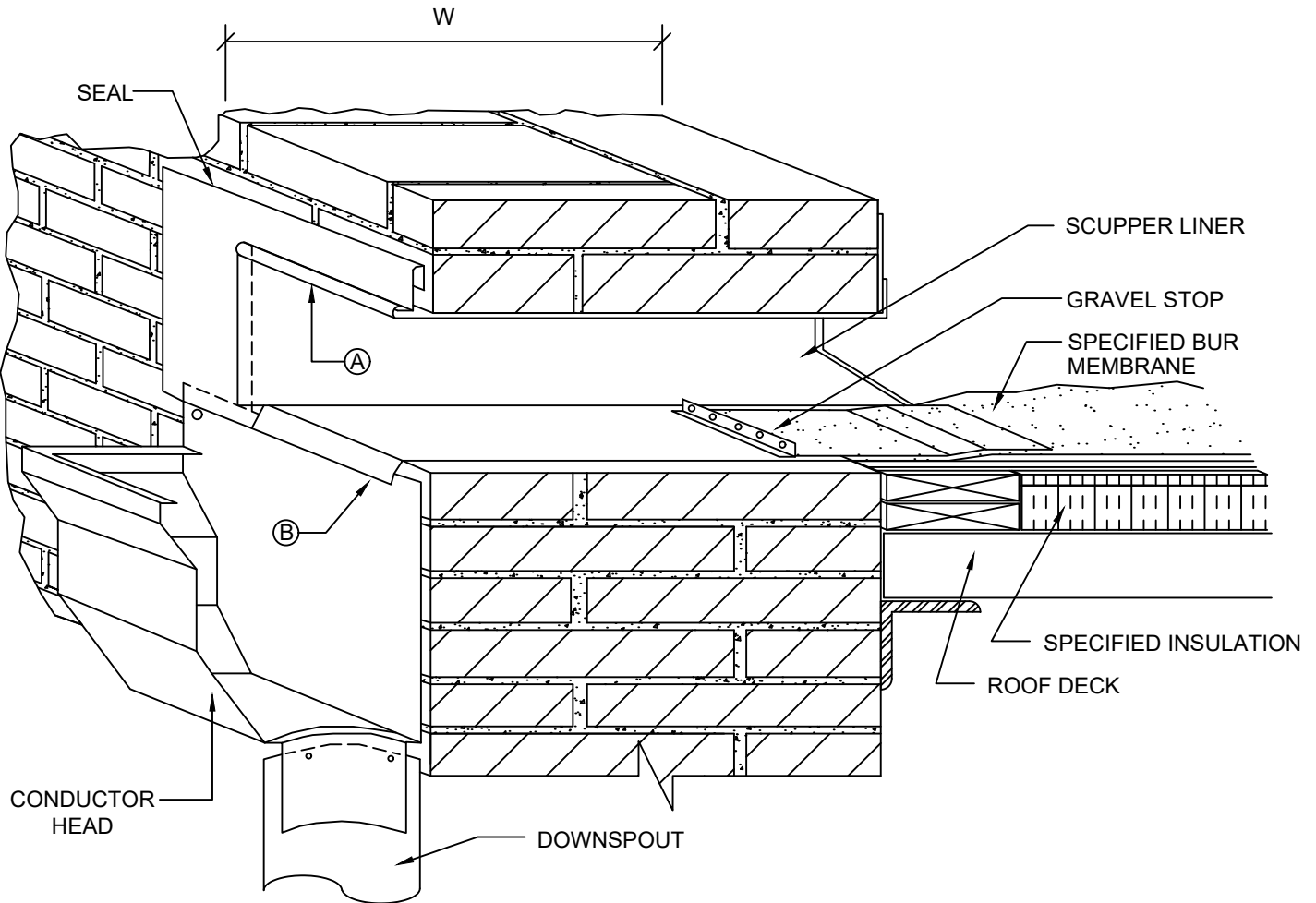
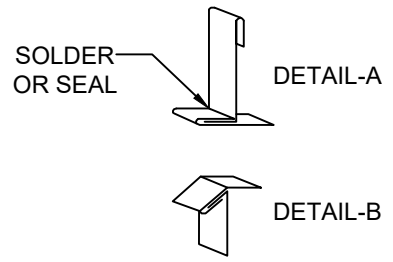
NOTES

1. BEFORE NEXT DAY'S WORK, REMOVE TEMPORARY TIE-IN AND INSULATION FILLERS

BUILT UP ROOFING  
HOT/COLD DAILY WATERSTOP / TIE IN  
DWG NO. 30

N.T.S.





### NOTES

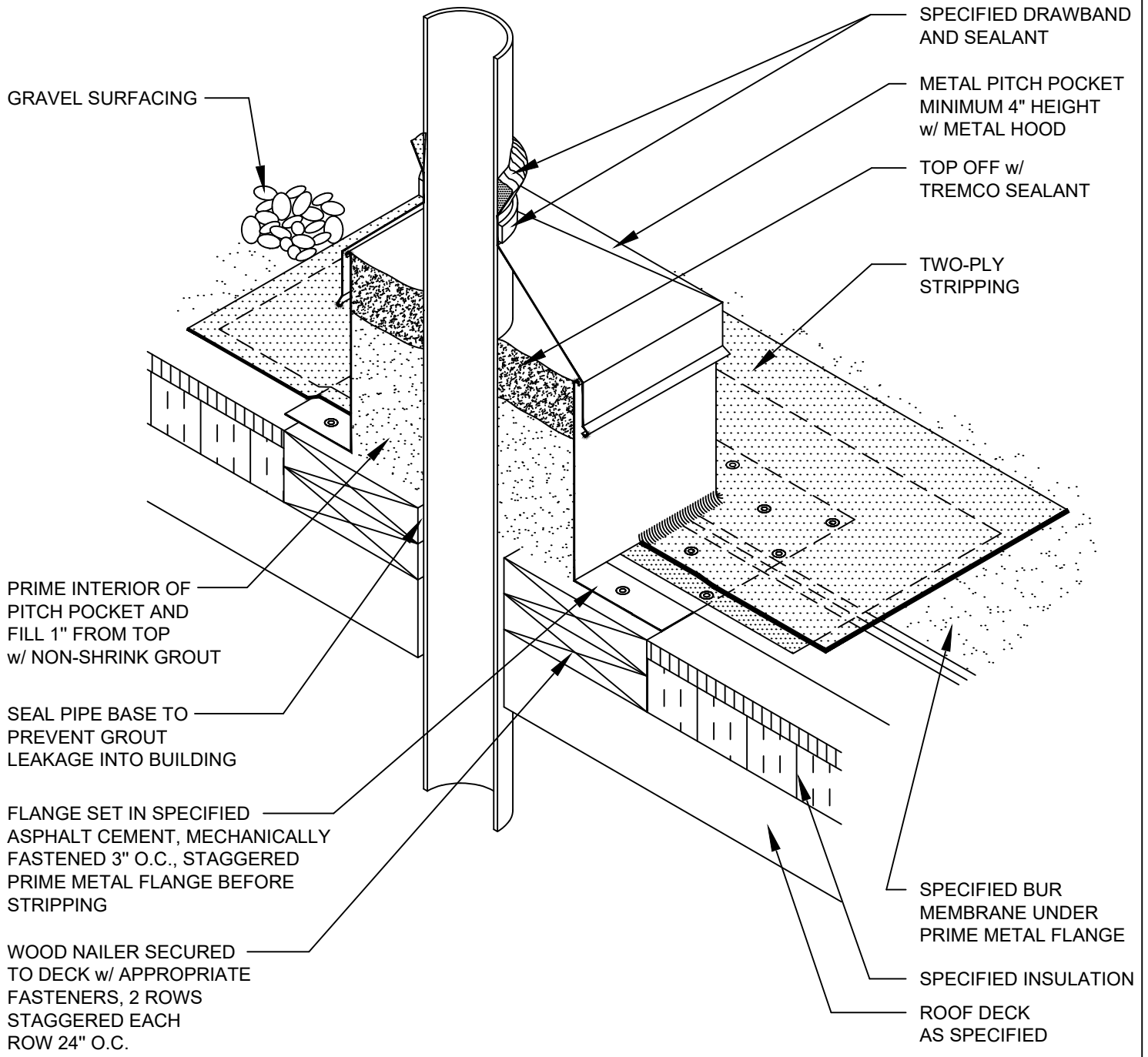
1. MATCH EXISTING CONDUCTOR HEAD PROFILE AND SIZE.
2. W = NOMINAL WIDTH OF PARAPET
3. FABRICATE AND INSTALL COMPONENTS IN ACCORDANCE WITH PROJECT SPECIFICATIONS AND SMACNA REQUIREMENTS AND STANDARDS.

BUILT UP ROOFING  
HOT/COLD THRU-WALL  
SCUPPER WITH CONDUCTOR HEAD

DWG NO. 31

N.T.S.

**TREMCO**  
ROOFING & BUILDING MAINTENANCE



BUILT UP ROOFING  
HOT/COLD PITCH POCKET WITH GROUT  
DWG NO. 33

N.T.S.

**TREMCO**  
ROOFING & BUILDING MAINTENANCE

JOINT COVER 4"-6" WIDE  
SET IN ASPHALT CEMENT  
AND SECURED USING TWO  
FASTENERS THROUGH THE  
GAP IN THE FASCIA FLANGE

FASTENERS 3" O.C.  
STAGGERED 2 ROWS

FELT  
ENVELOPE

1/2" MIN.  
10'-0" MAX.

TWO-PLY STRIPPING

GRAVEL SURFACING

METAL SET IN ASPHALT  
CEMENT- PRIME FLANGE  
BEFORE STRIPPING

SPECIFIED BUR MEMBRANE

SPECIFIED TREMCO  
ADHESIVE

SPECIFIED INSULATION

ROOF DECK  
AS SPECIFIED

ATTACH WOOD NAILER  
TO WALL

CONTINUOUS CLEAT  
FASTENED 16" O.C.

### NOTES

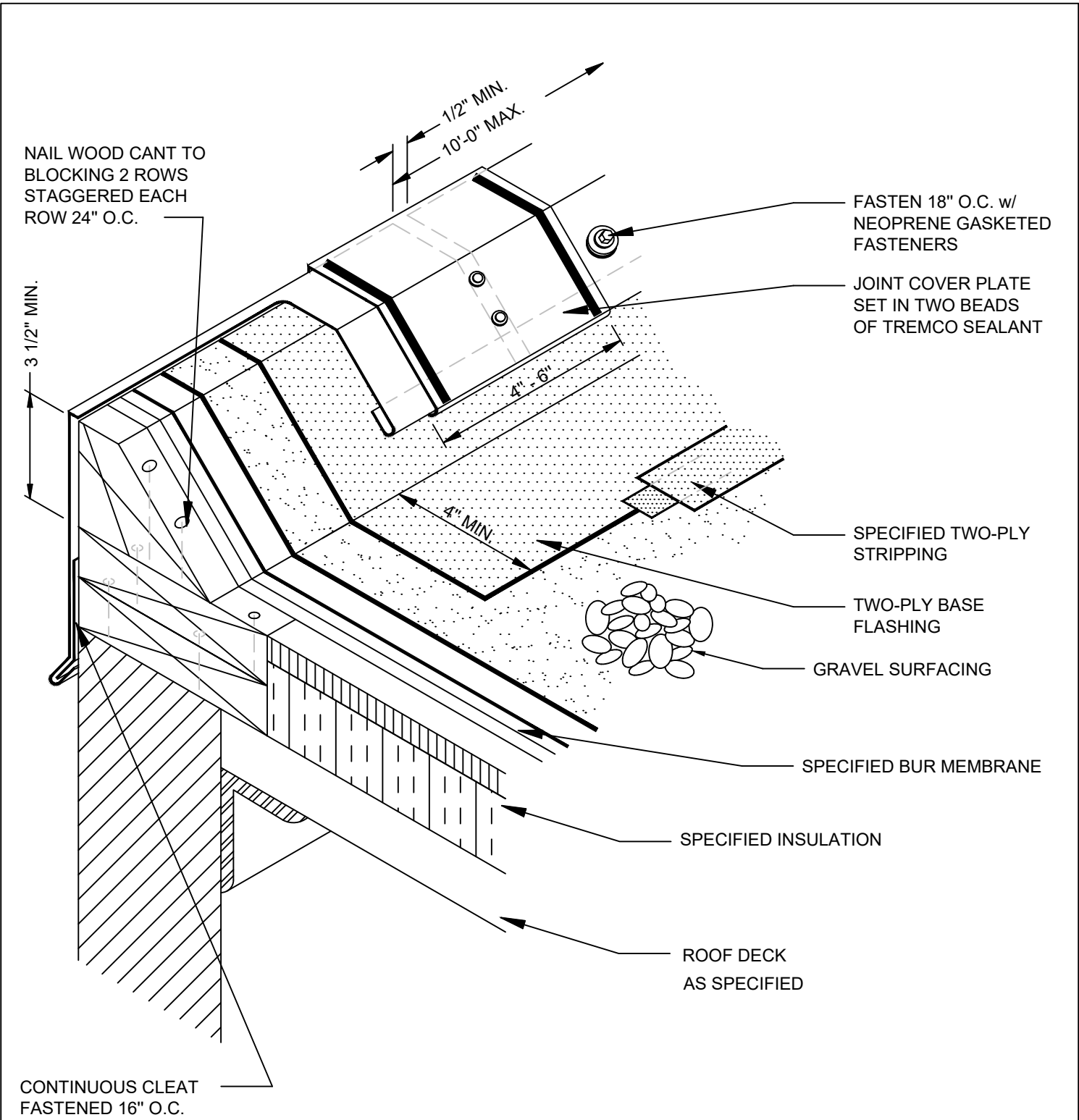
1. ALL METAL SURFACES SHALL BE PRIMED BEFORE CONTACT WITH TREMCO PRIMERS

BUILT UP ROOFING  
HOT/COLD LIGHT-METAL ROOF EDGE

DWG NO. 34

N.T.S.

**TREMCO**  
ROOFING & BUILDING MAINTENANCE



**NOTES**

1. SECURE COVER PLATE USING TWO FASTENERS WITH NEOPRENE GASKETS AT THE CENTER OF EACH FASCIA SECTION

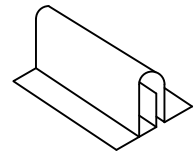
BUILT UP ROOFING  
HOT/COLD LIGHT-METAL ROOF EDGE, RAISED

DWG NO. 35

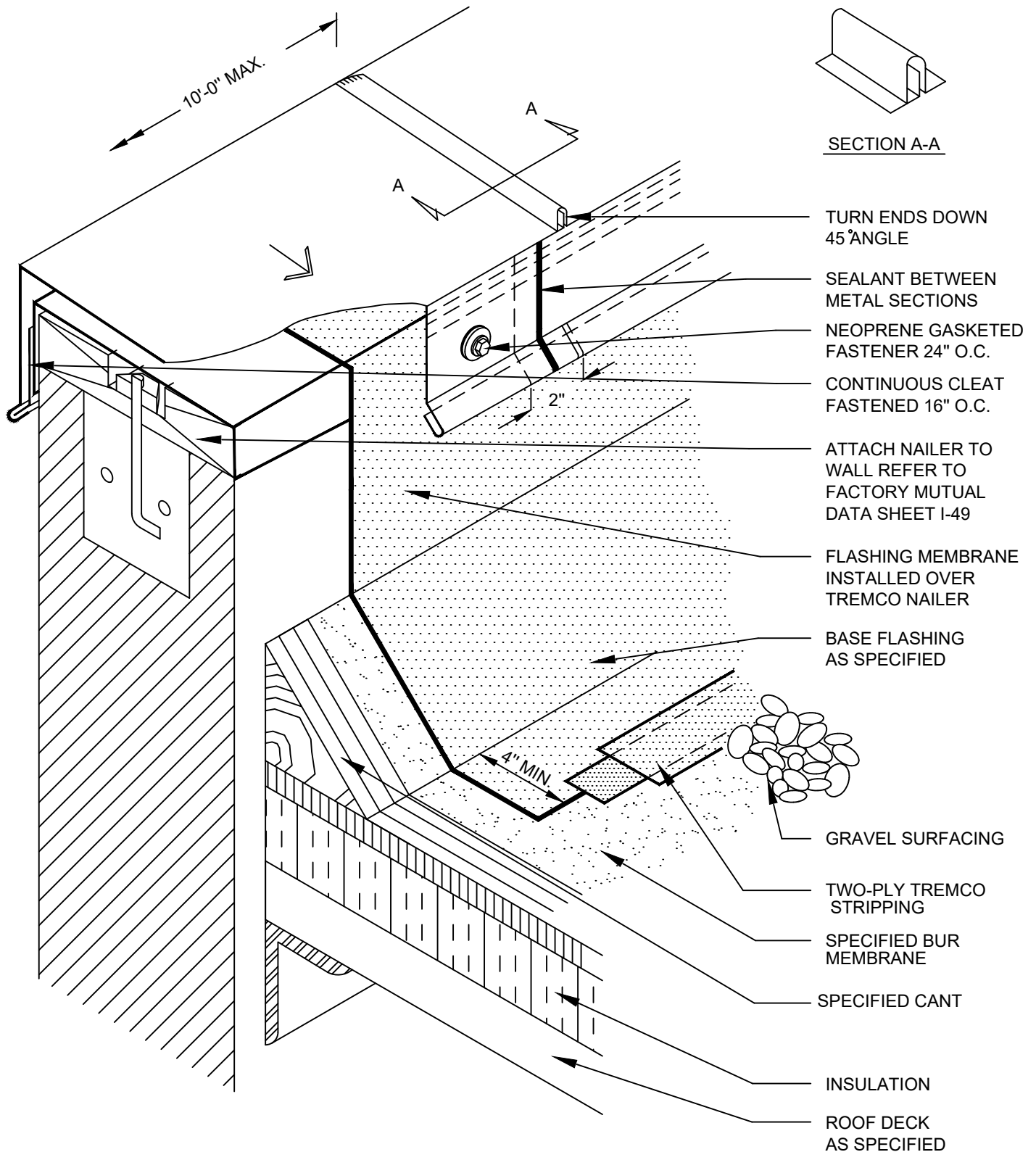
N.T.S.







SECTION A-A

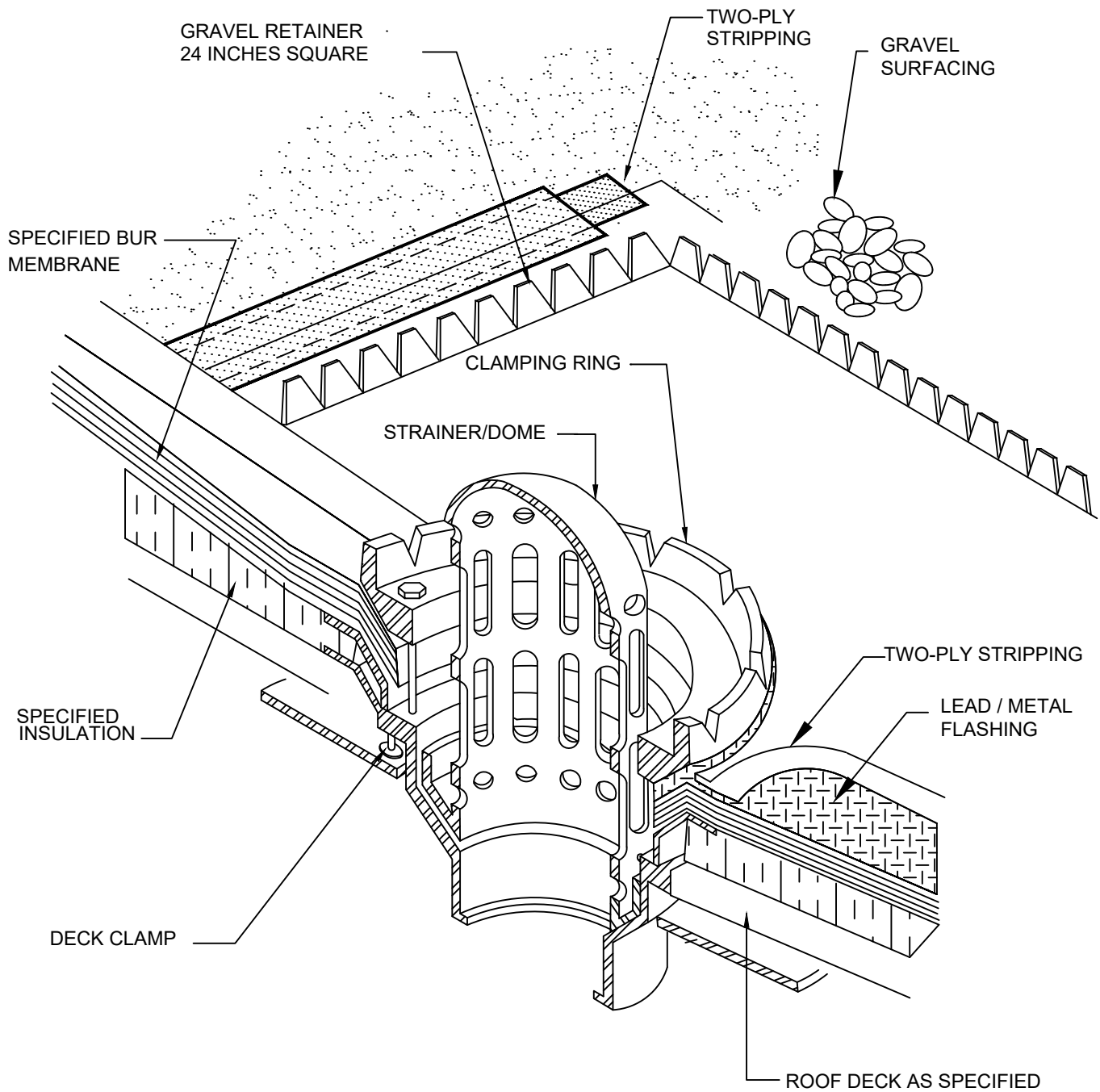


BUILT UP ROOFING  
HOT/COLD LIGHT METAL PARAPET CAP

DWG NO. 36

N.T.S.

**TREMCO**  
ROOFING & BUILDING MAINTENANCE



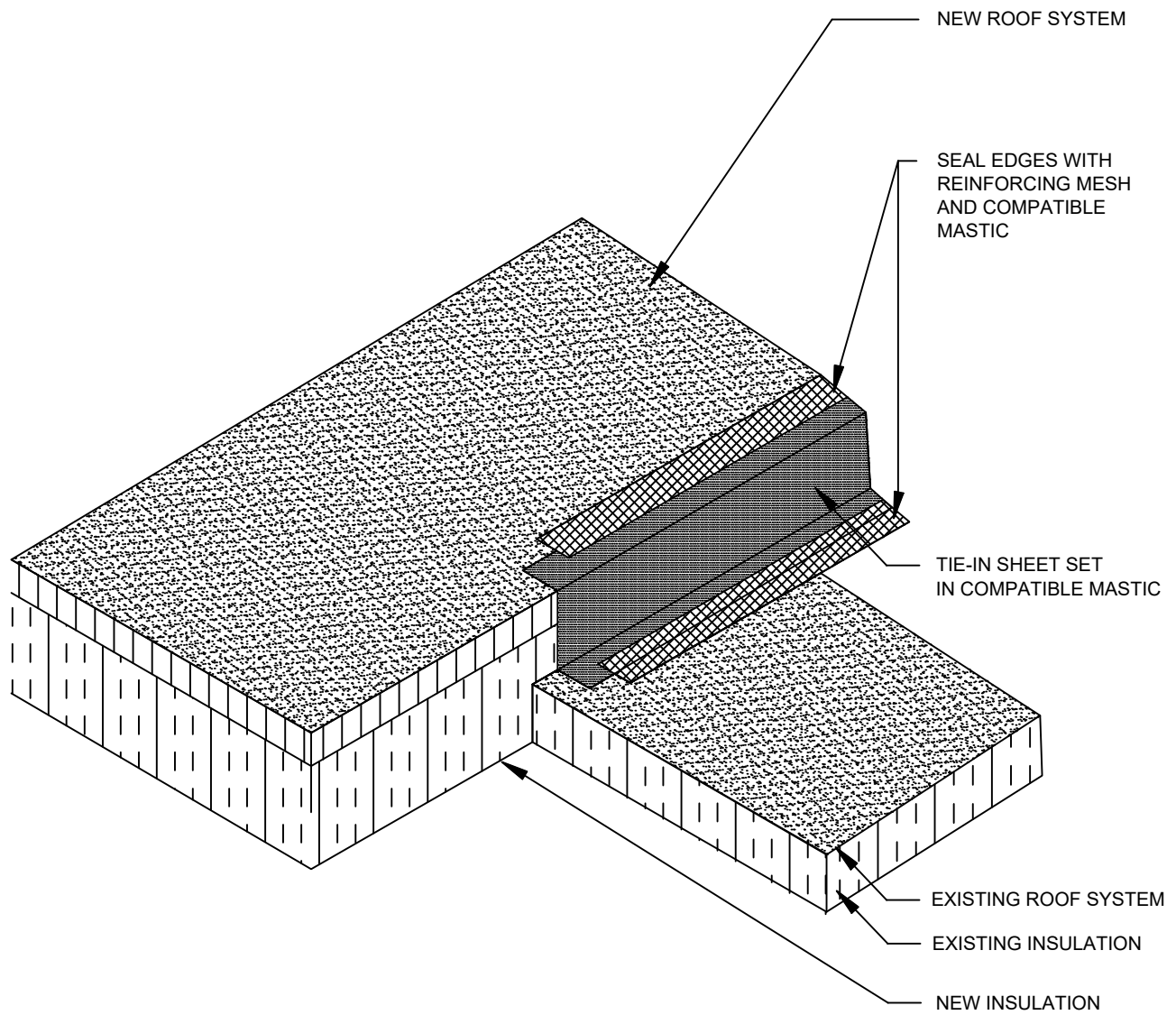
## NOTES

1. PRIME ALL METAL SURFACES THAT WILL COME INTO CONTACT WITH ADHESIVES

BUILT UP ROOFING  
HOT/COLD ROOF DRAIN WITH GRAVEL GUARD  
DWG NO. 37

N.T.S.

**TREMCO**  
ROOFING & BUILDING MAINTENANCE



**NOTES**

1. BEFORE NEXT DAY'S WORK, REMOVE TEMPORARY TIE-IN AND INSULATION FILLERS
2. EXTEND TIE-IN SHEET MINIMUM OF 6-INCHES ONTO BOTH SURFACES

ASPHALTIC ROOFING SYSTEMS  
 DAILY WATERSTOP / TIE-IN  
 DWG NO. 30A

N.T.S.

