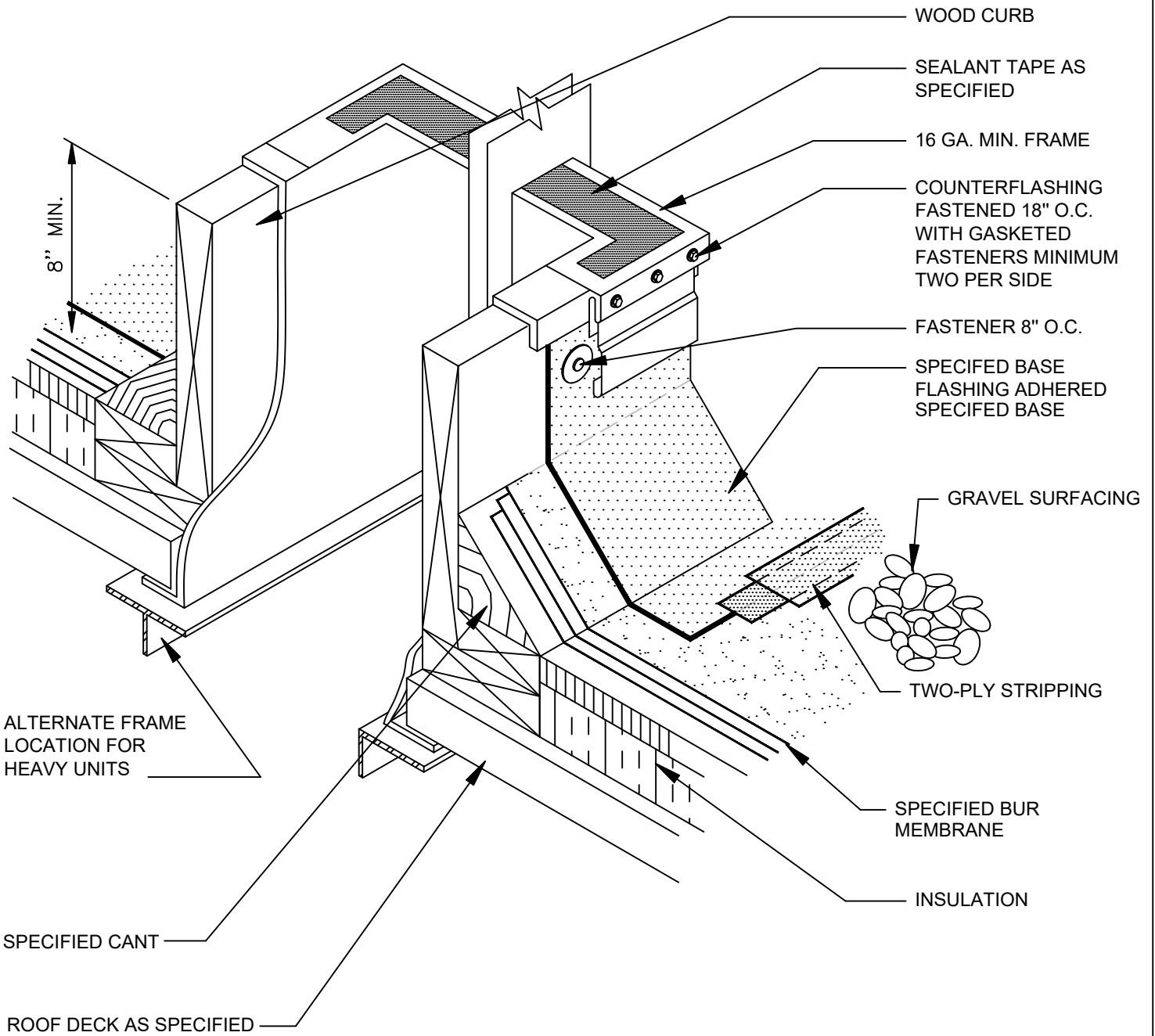


BUILT-UP ROOFING
HOT/COLD BASE FLASHING AREA DIVIDER

DWG NO. 01

N.T.S.



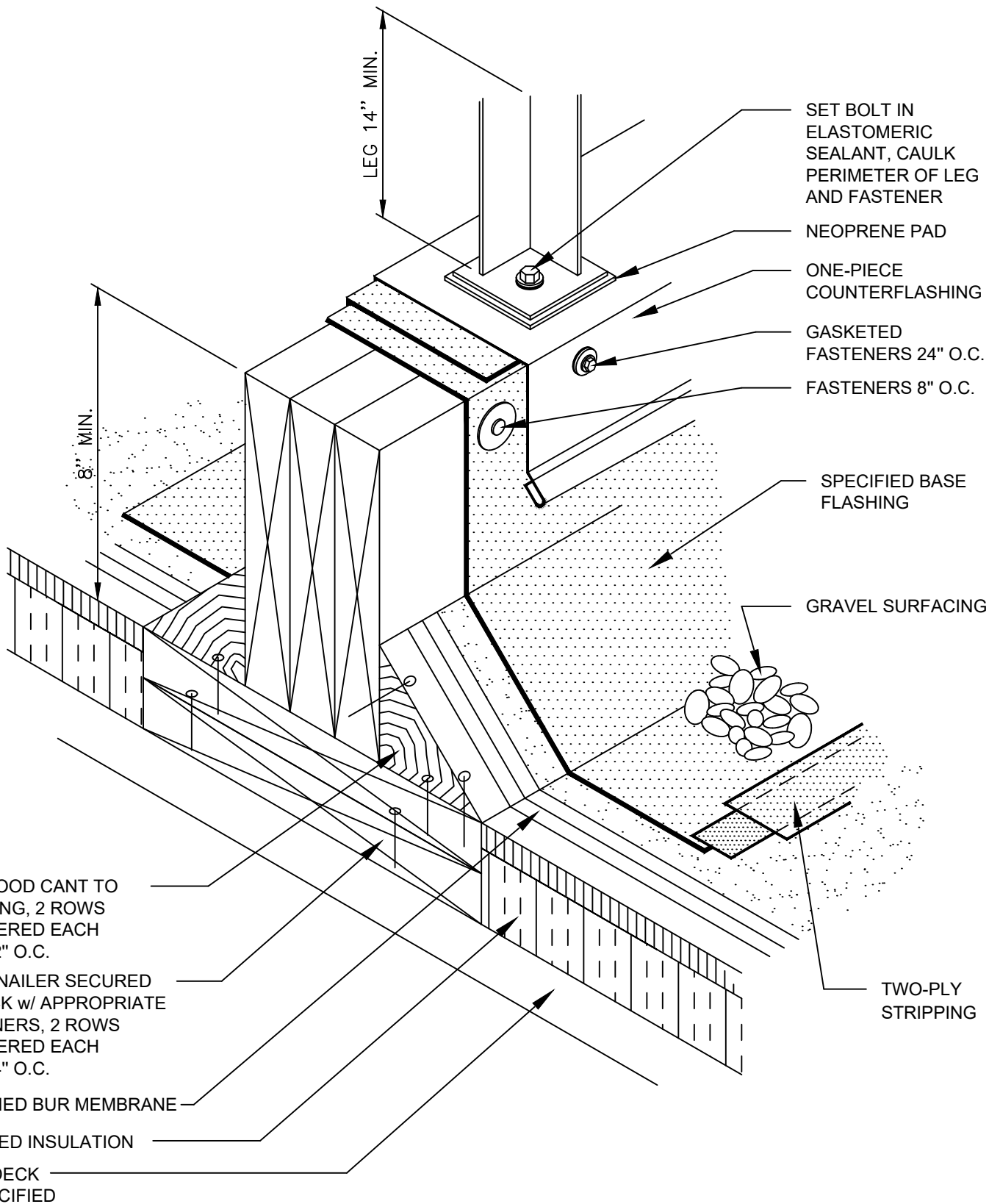


BUILT-UP ROOFING
 HOT/COLD BASE FLASHING
 CURB FOR AIR HANDLING UNIT

DWG NO. 03

N.T.S.

TREMCO
 ROOFING & BUILDING MAINTENANCE



LEG 14" MIN.

8" MIN.

SET BOLT IN ELASTOMERIC SEALANT, CAULK PERIMETER OF LEG AND FASTENER

NEOPRENE PAD

ONE-PIECE COUNTERFLASHING

GASKETED FASTENERS 24" O.C.

FASTENERS 8" O.C.

SPECIFIED BASE FLASHING

GRAVEL SURFACING

TWO-PLY STRIPPING

NAIL WOOD CANT TO BLOCKING, 2 ROWS STAGGERED EACH ROW 12" O.C.

WOOD NAILER SECURED TO DECK w/ APPROPRIATE FASTENERS, 2 ROWS STAGGERED EACH ROW 24" O.C.

SPECIFIED BUR MEMBRANE

SPECIFIED INSULATION

ROOF DECK AS SPECIFIED

BUILT-UP ROOFING HOT/COLD BASE FLASHING EQUIPMENT CURB SUPPORT

DWG NO. 04

N.T.S.



FLEXIBLE IMPERVIOUS
MEMBRANE ADHERED TO
VAPOR RETARDER

FLEXIBLE VAPOR
RETARDER TO SERVE
AS INSULATION RETAINER

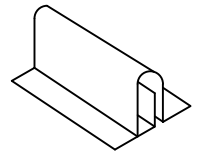
CHAMFER EACH
SIDE OF WOOD
CURB TO DRAIN

8" MIN.

INORGANIC
COMPRESSIBLE
INSULATION

WOOD NAILER SECURED
TO DECK w/ APPROPRIATE
FASTENERS, 2 ROWS
STAGGERED EACH
ROW 24" O.C.

NAIL WOOD CANT TO
BLOCKING, 2 ROWS
STAGGERED EACH
ROW 12" O.C.



SECTION A-A

TURN ENDS DOWN
45° ANGLE
FASTENERS 8" O.C.
BOTH SIDES

FASTEN 18" O.C. w/
NEOPRENE GASKETED
FASTENERS

SEAL

SPECIFIED BASE
FLASHING

GRAVEL
SURFACING

TWO-PLY
STRIPPING

SPECIFIED BUR
MEMBRANE

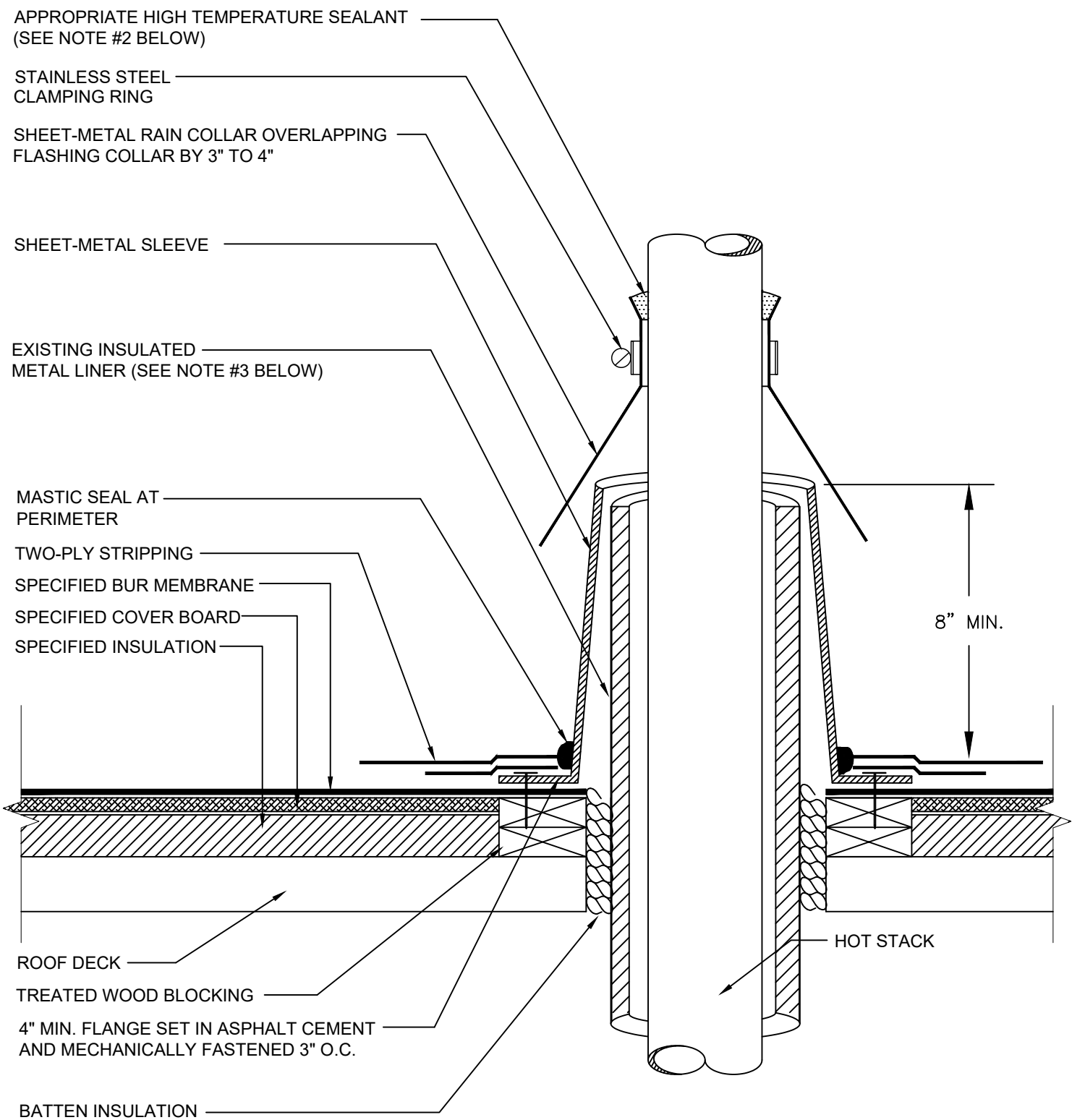
INSULATION

ROOF DECK
AS SPECIFIED

BUILT-UP ROOFING
HOT/COLD STANDING SEAM EXPANSION JOINT
DWG NO. 05

N.T.S.

TREMCO
ROOFING & BUILDING MAINTENANCE



NOTES

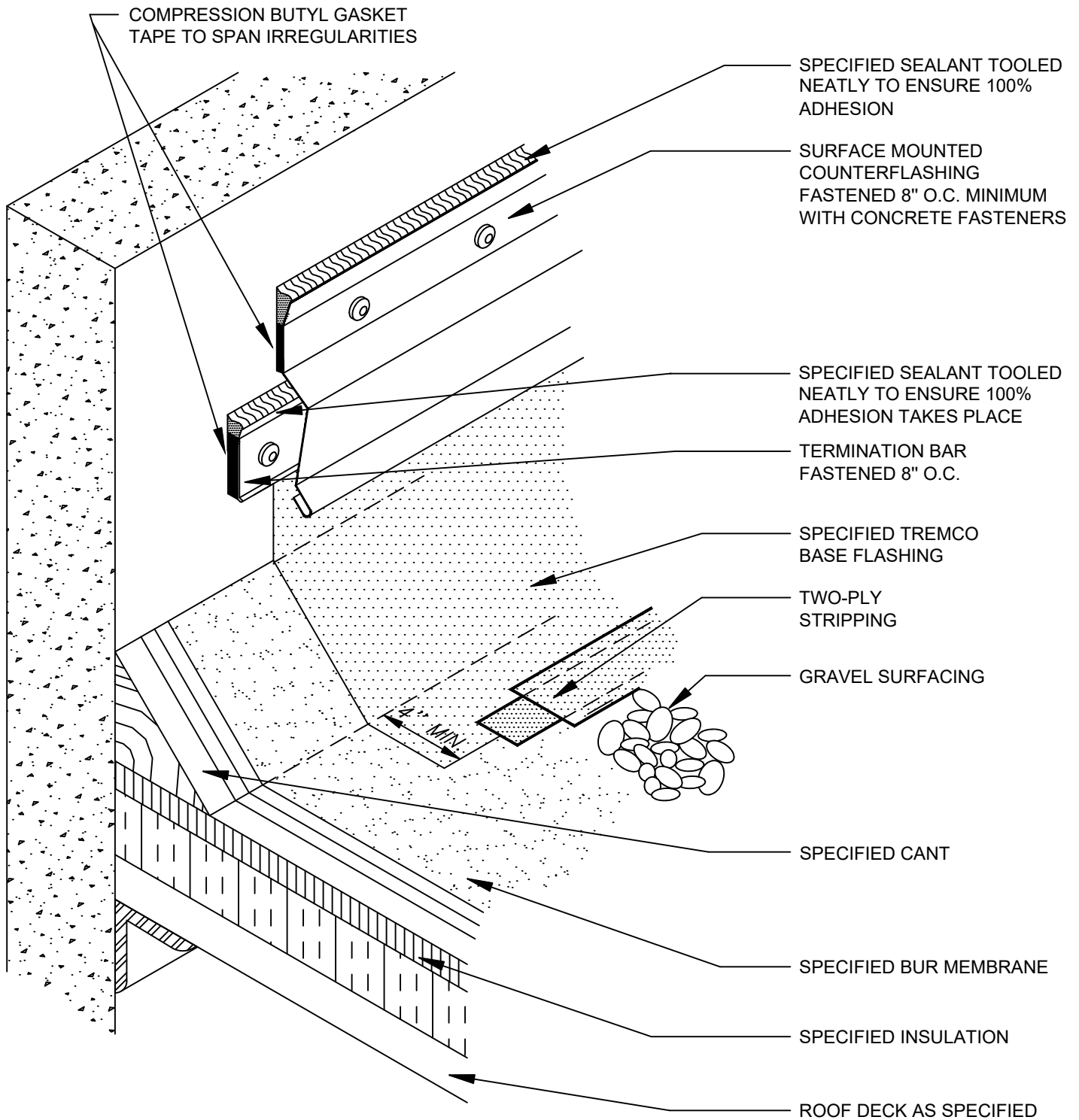
1. PRIME ALL METAL SURFACES THAT WILL COME INTO CONTACT WITH THE SPECIFIED ADHESIVE.
2. WHEN HOT STACK SERVICE TEMPERATURE EXCEEDS 400 DEGREES, WELD OR SOLDER RAIN COLLAR TO PIPE IN LIEU OF INSTALLING SEALANT.
3. THE CLEARANCE REQUIRED BETWEEN THE HOT PIPE AND INSULATED METAL LINER WILL DEPEND ON THE TEMPERATURE OF THE MATERIAL HANDLED BY THE STACK.

BUILT-UP ROOFING HOT/COLD
HOT STACK PENETRATION

DWG NO. 07

N.T.S.

TREMCO
ROOFING & BUILDING MAINTENANCE

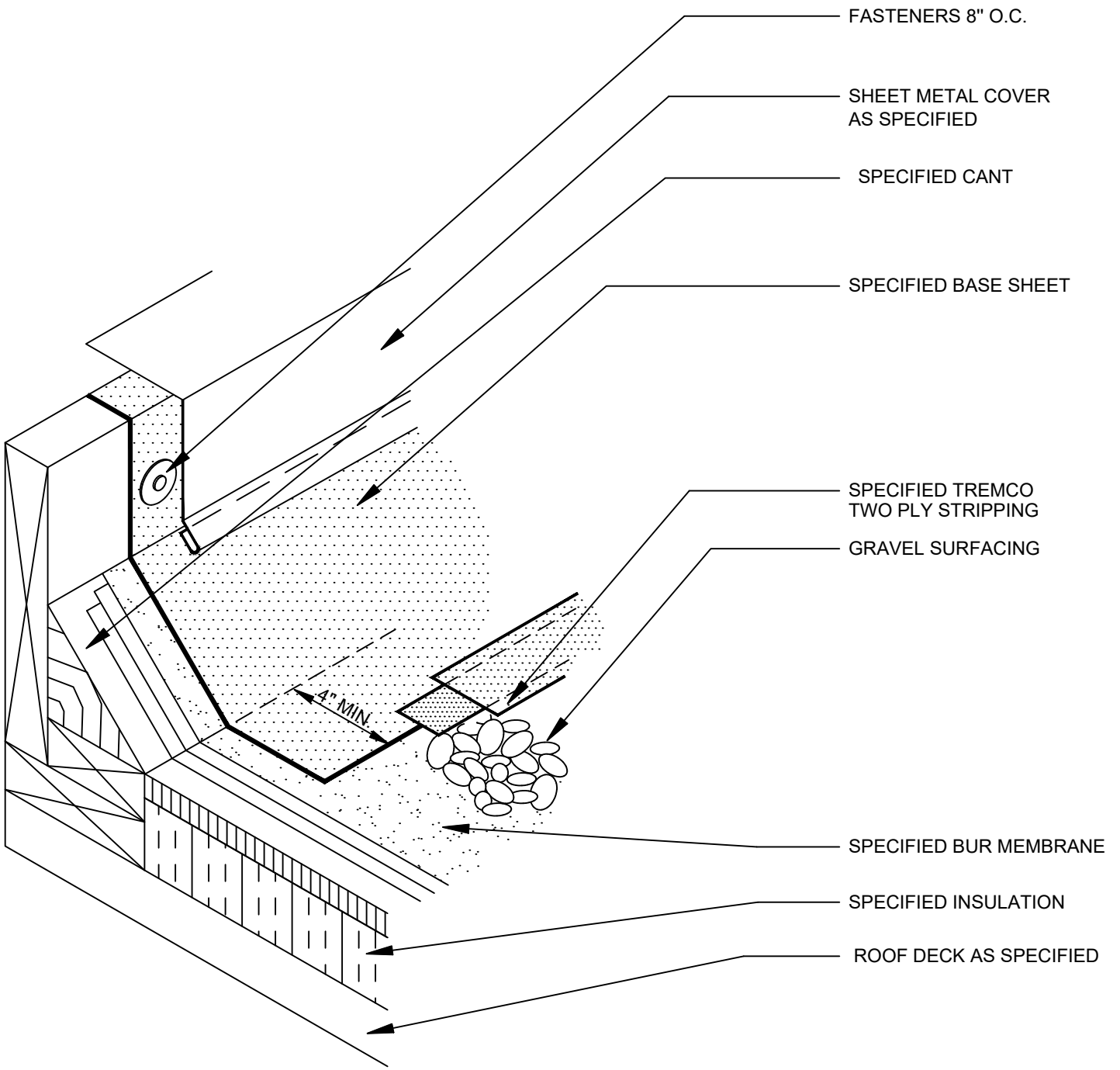


BUILT-UP ROOFING
HOT/COLD WALL FLASHING FOR
CONCRETE WALLS AND PARAPETS

DWG NO. 12

N.T.S.

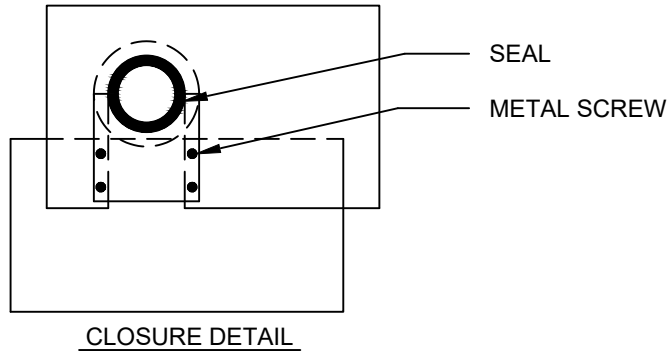




BUILT-UP ROOFING
 HOT/COLD WOOD CURB
 DWG NO. 17

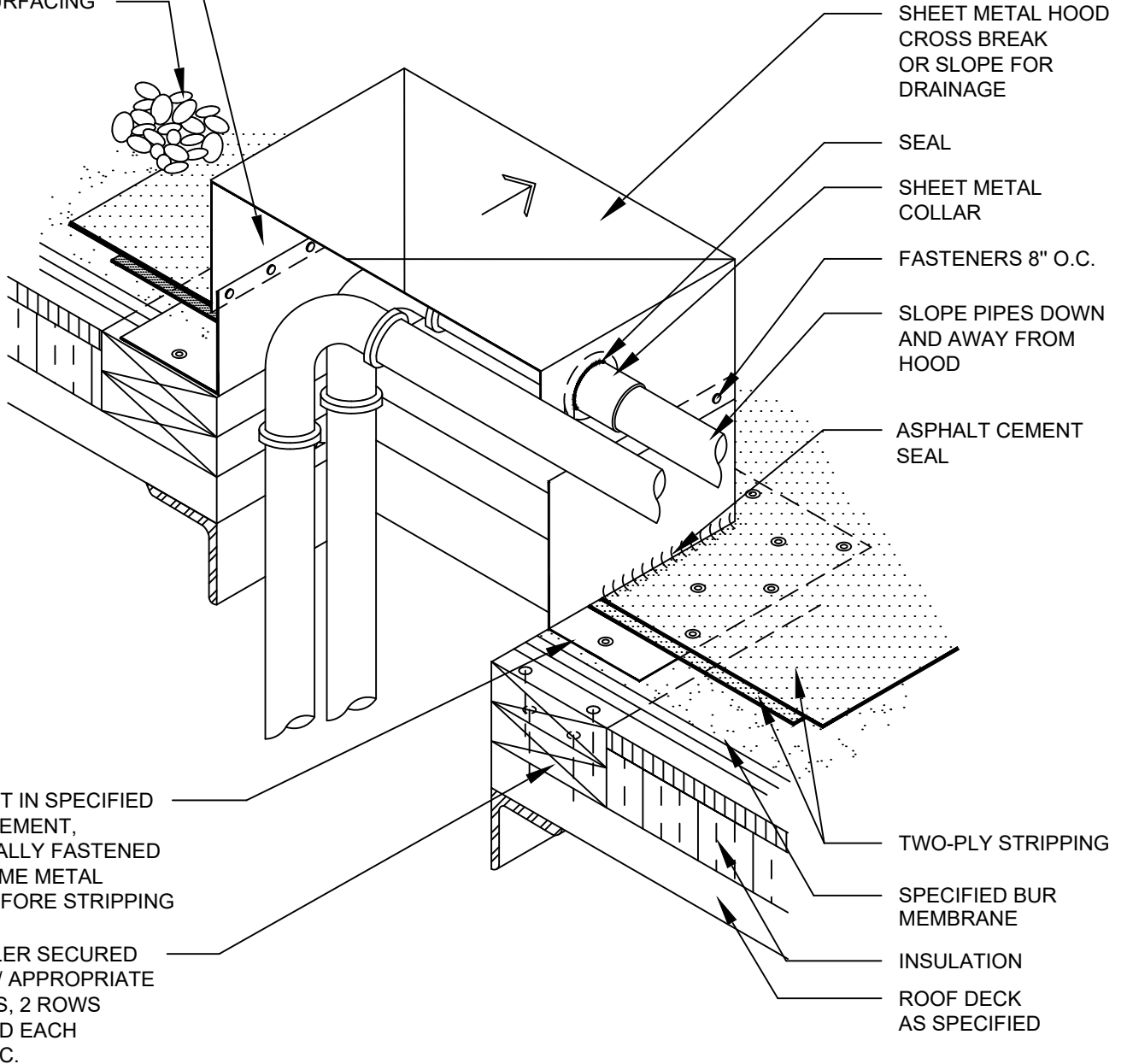
N.T.S.





INSULATE INSIDE OF METAL WORK IN COLD CLIMATES

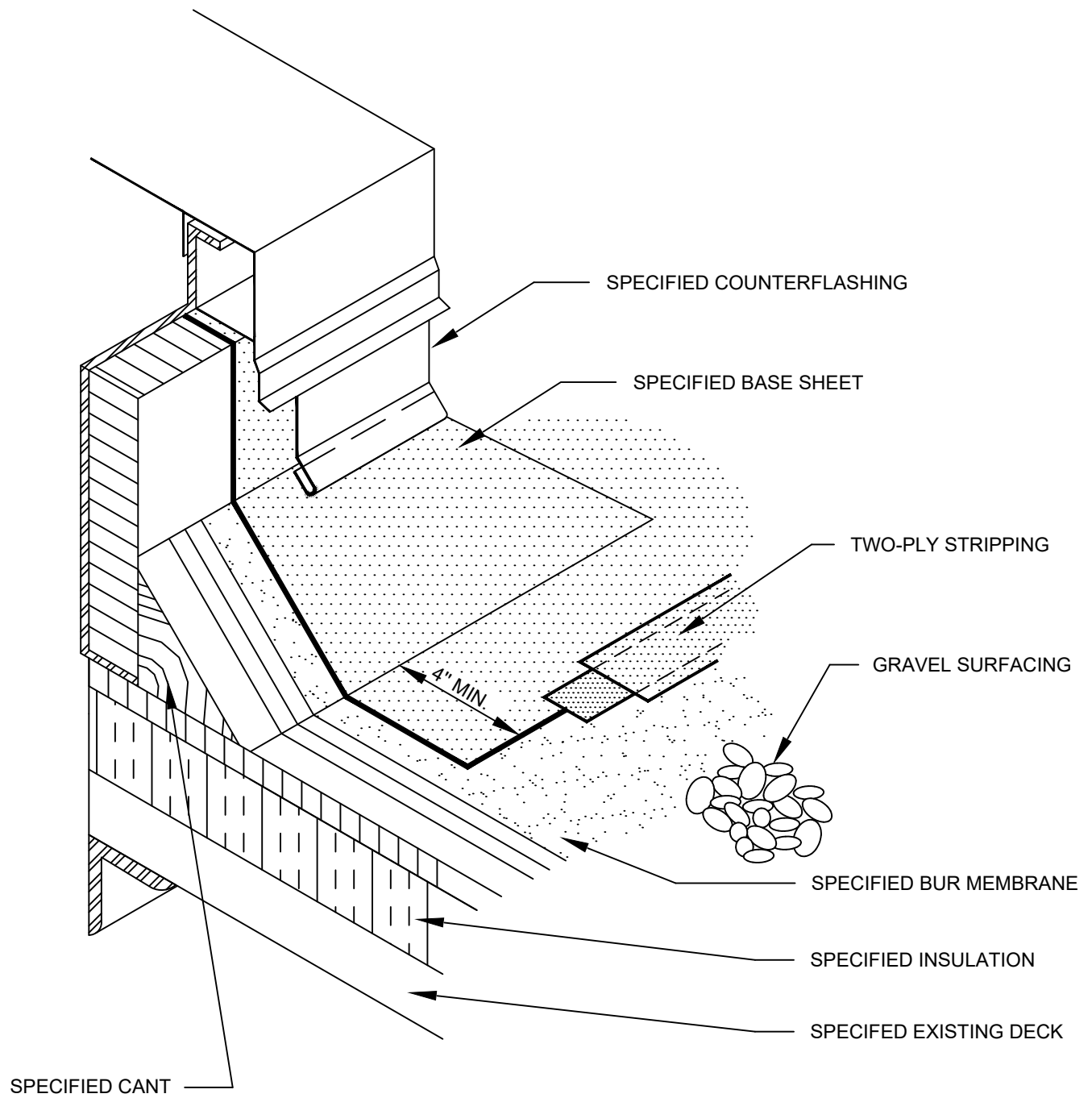
GRAVEL SURFACING



BUILT UP ROOFING
HOT/COLD PIPING THROUGH ROOF DECK
DWG NO. 18

N.T.S.

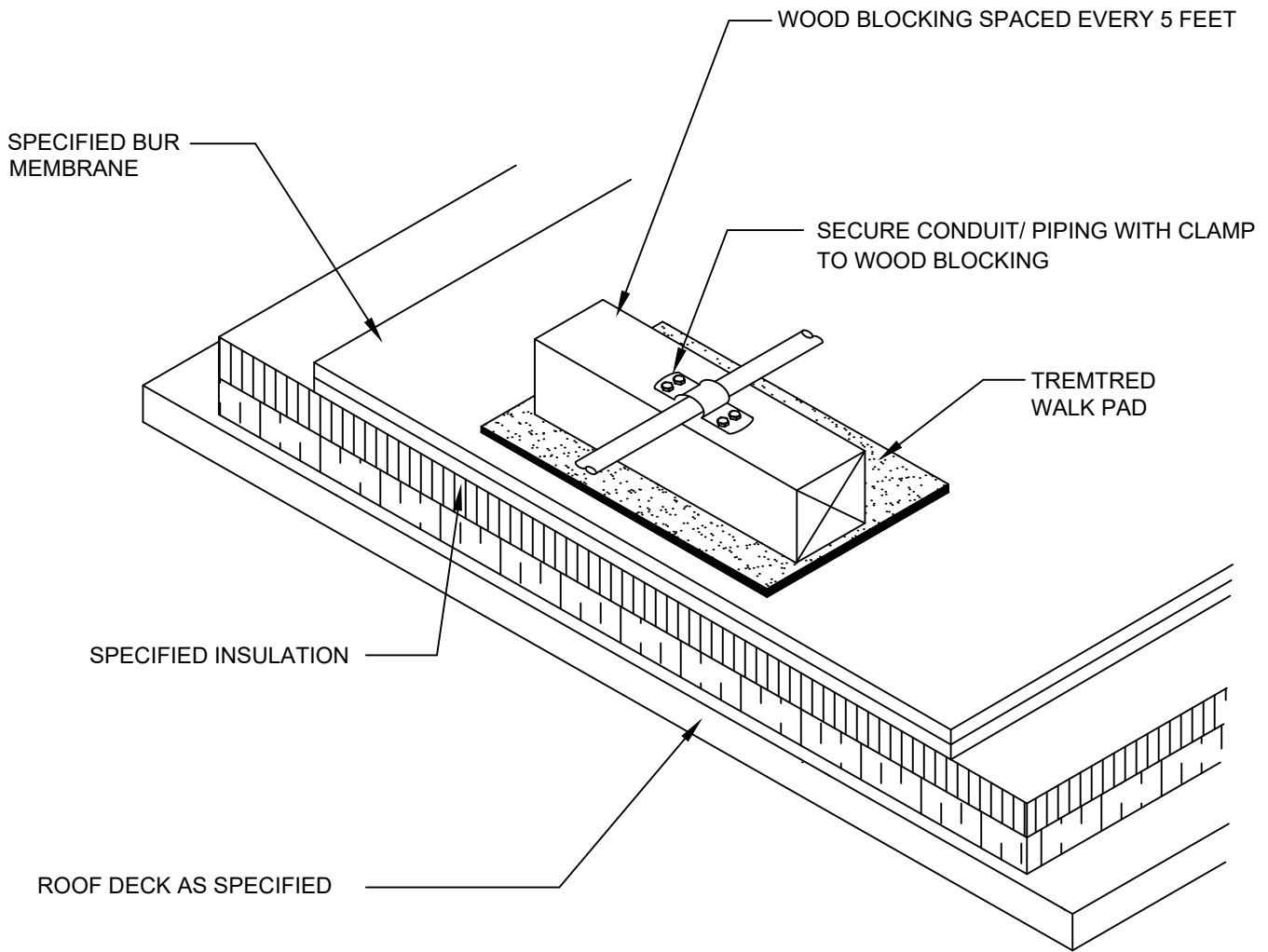




BUILT UP ROOFING
HOT/COLD ROOF HATCH
DWG NO. 25

N.T.S.

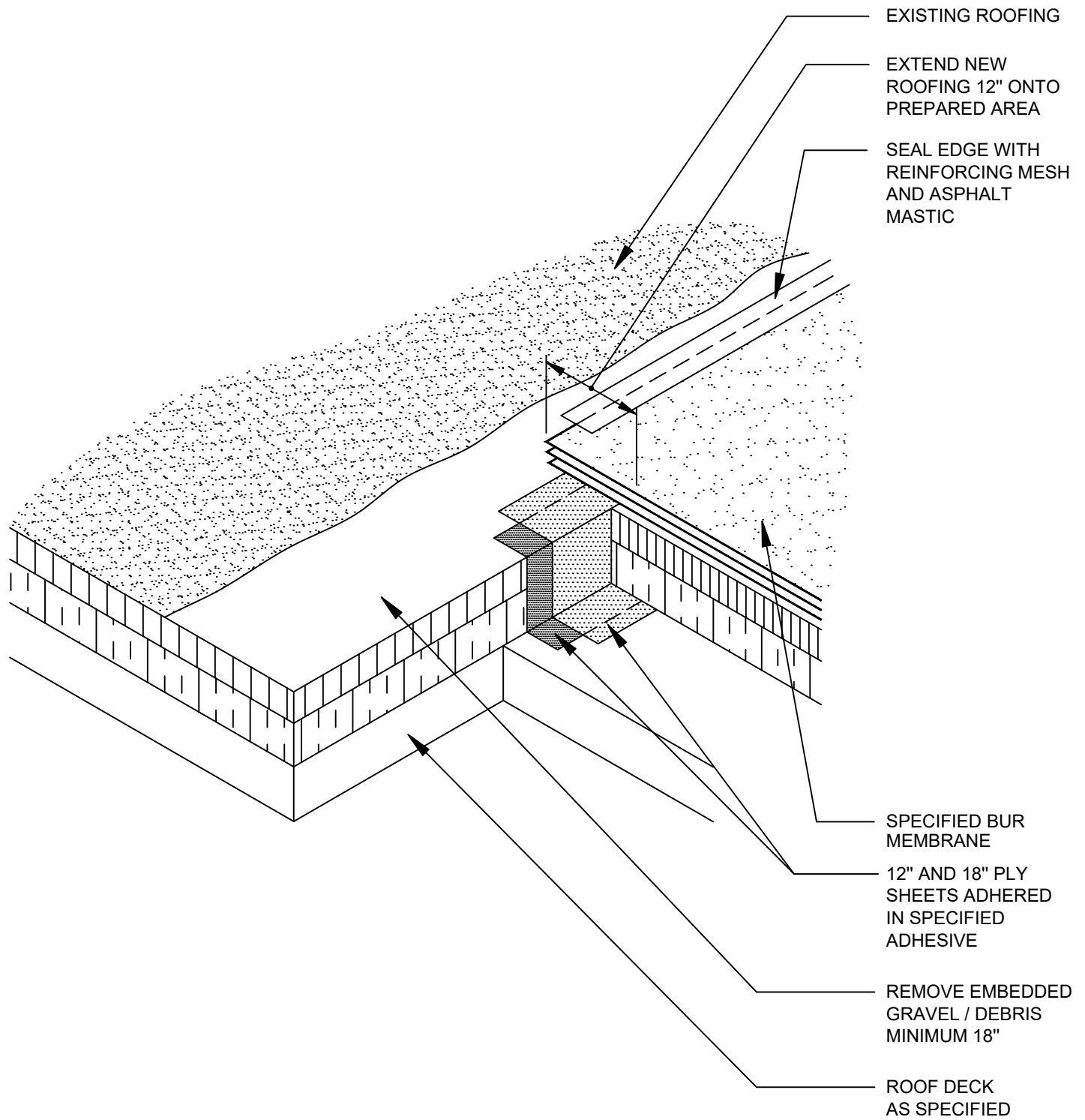
TREMCO
ROOFING & BUILDING MAINTENANCE



BUILT UP ROOFING
 HOT/COLD CONDUIT OR PIPING SUPPORT
 DWG NO. 28

N.T.S.





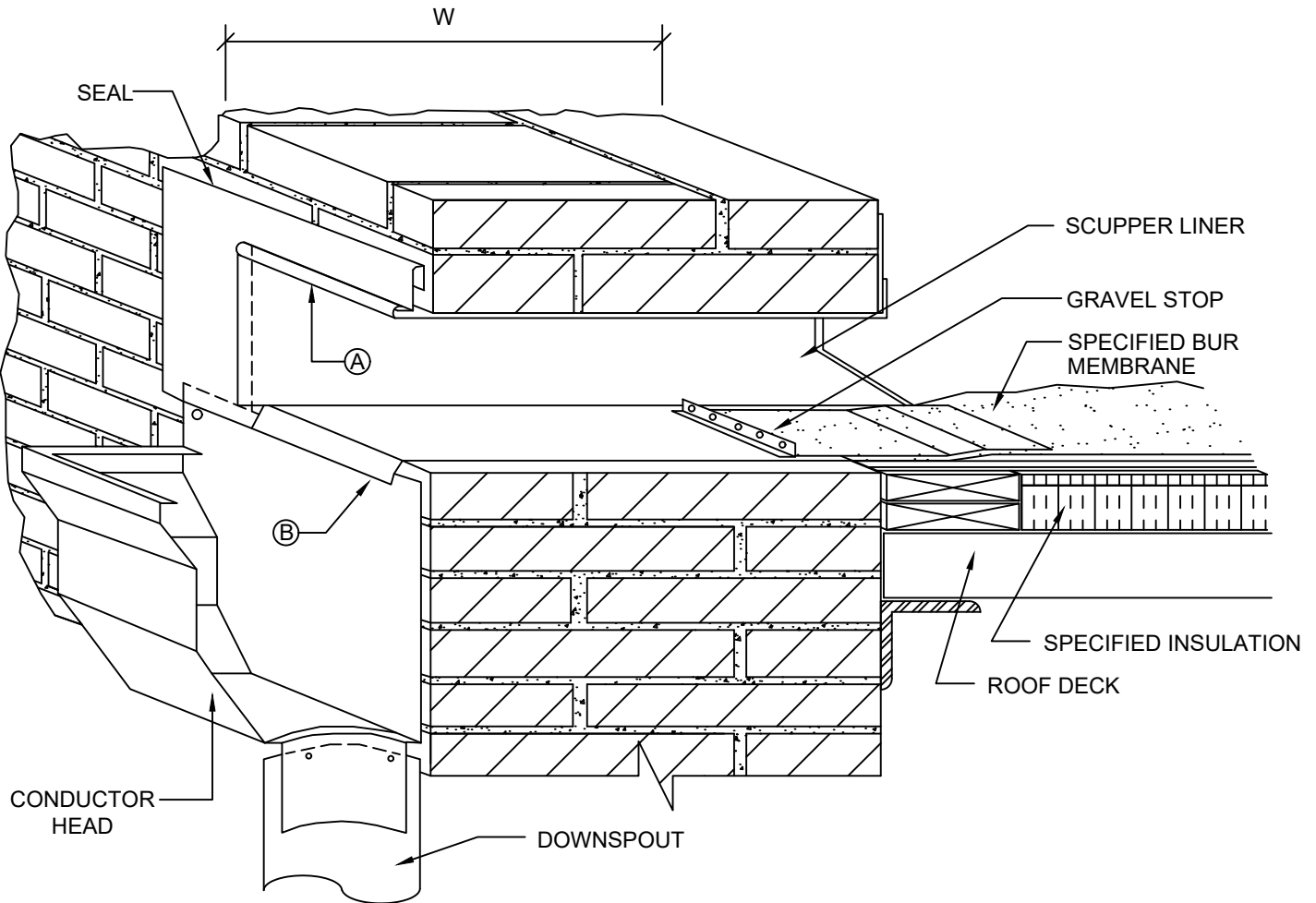
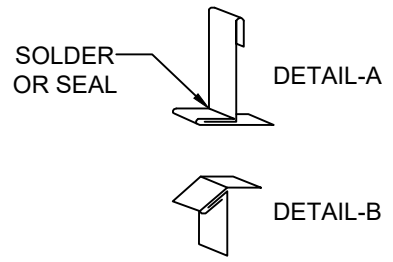
NOTES

1. BEFORE NEXT DAY'S WORK, REMOVE TEMPORARY TIE-IN AND INSULATION FILLERS

BUILT UP ROOFING
HOT/COLD DAILY WATERSTOP / TIE IN
DWG NO. 30

N.T.S.





NOTES

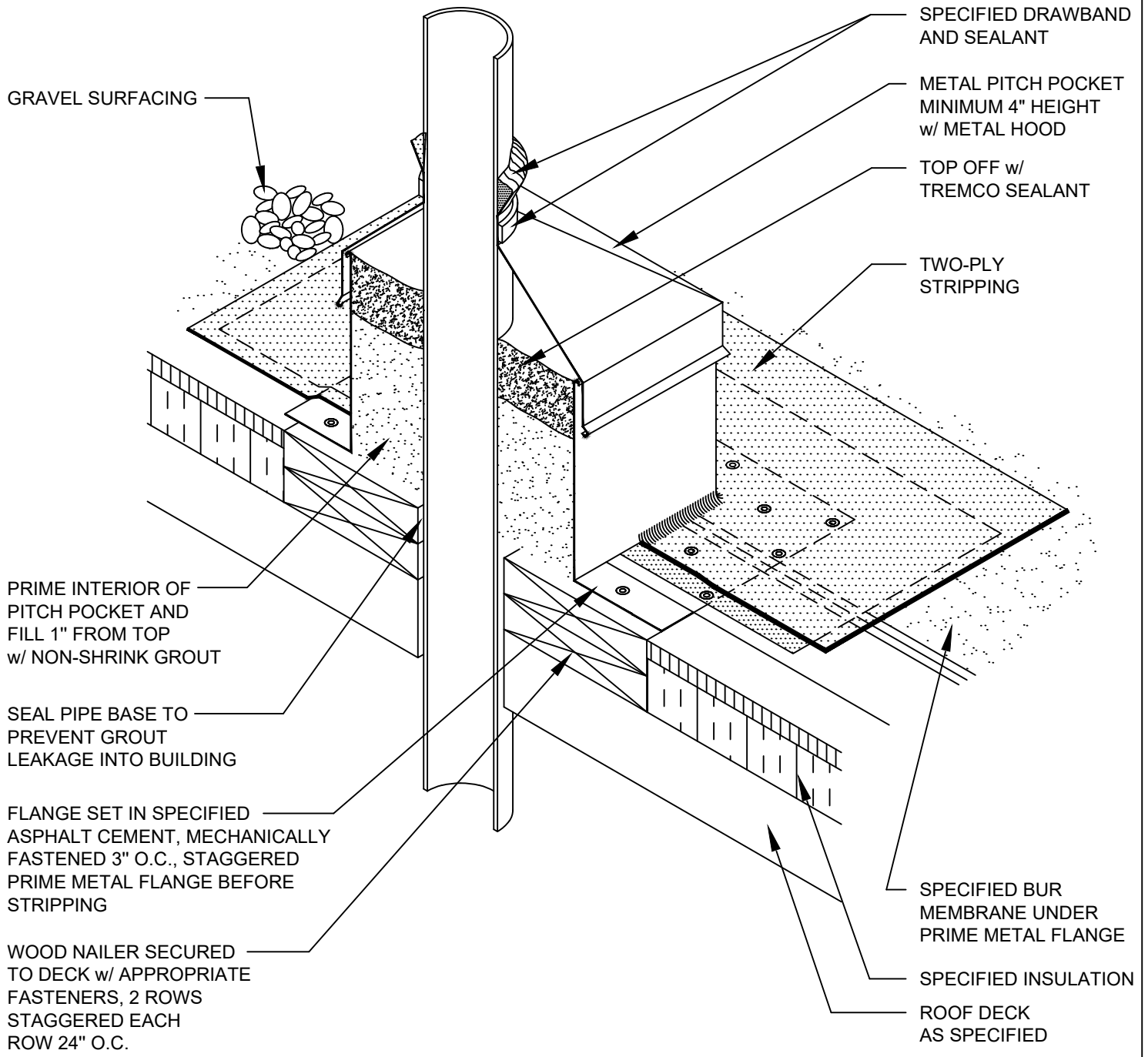
1. MATCH EXISTING CONDUCTOR HEAD PROFILE AND SIZE.
2. W = NOMINAL WIDTH OF PARAPET
3. FABRICATE AND INSTALL COMPONENTS IN ACCORDANCE WITH PROJECT SPECIFICATIONS AND SMACNA REQUIREMENTS AND STANDARDS.

BUILT UP ROOFING
HOT/COLD THRU-WALL
SCUPPER WITH CONDUCTOR HEAD

DWG NO. 31

N.T.S.

TREMCO
ROOFING & BUILDING MAINTENANCE



BUILT UP ROOFING
HOT/COLD PITCH POCKET WITH GROUT
DWG NO. 33

N.T.S.



JOINT COVER 4"-6" WIDE
SET IN ASPHALT CEMENT
AND SECURED USING TWO
FASTENERS THROUGH THE
GAP IN THE FASCIA FLANGE

FASTENERS 3" O.C.
STAGGERED 2 ROWS

FELT
ENVELOPE

1/2" MIN.
10'-0" MAX.

TWO-PLY STRIPPING

GRAVEL SURFACING

METAL SET IN ASPHALT
CEMENT- PRIME FLANGE
BEFORE STRIPPING

SPECIFIED BUR MEMBRANE

SPECIFIED TREMCO
ADHESIVE

SPECIFIED INSULATION

ROOF DECK
AS SPECIFIED

ATTACH WOOD NAILER
TO WALL

CONTINUOUS CLEAT
FASTENED 16" O.C.

NOTES

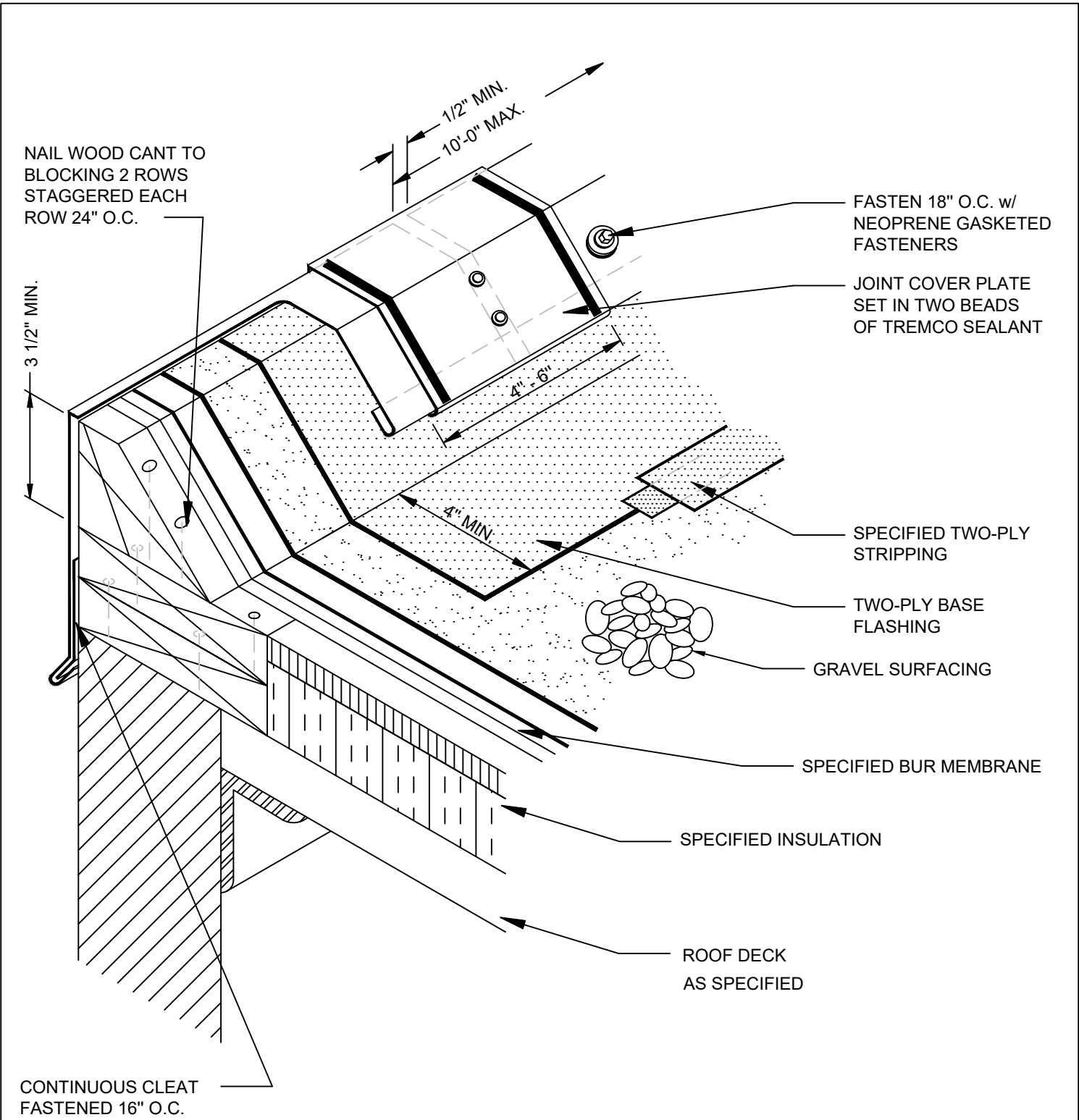
1. ALL METAL SURFACES SHALL BE PRIMED BEFORE CONTACT WITH TREMCO PRIMERS

BUILT UP ROOFING
HOT/COLD LIGHT-METAL ROOF EDGE

DWG NO. 34

N.T.S.

TREMCO
ROOFING & BUILDING MAINTENANCE



NOTES

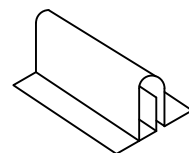
1. SECURE COVER PLATE USING TWO FASTENERS WITH NEOPRENE GASKETS AT THE CENTER OF EACH FASCIA SECTION

BUILT UP ROOFING
HOT/COLD LIGHT-METAL ROOF EDGE, RAISED

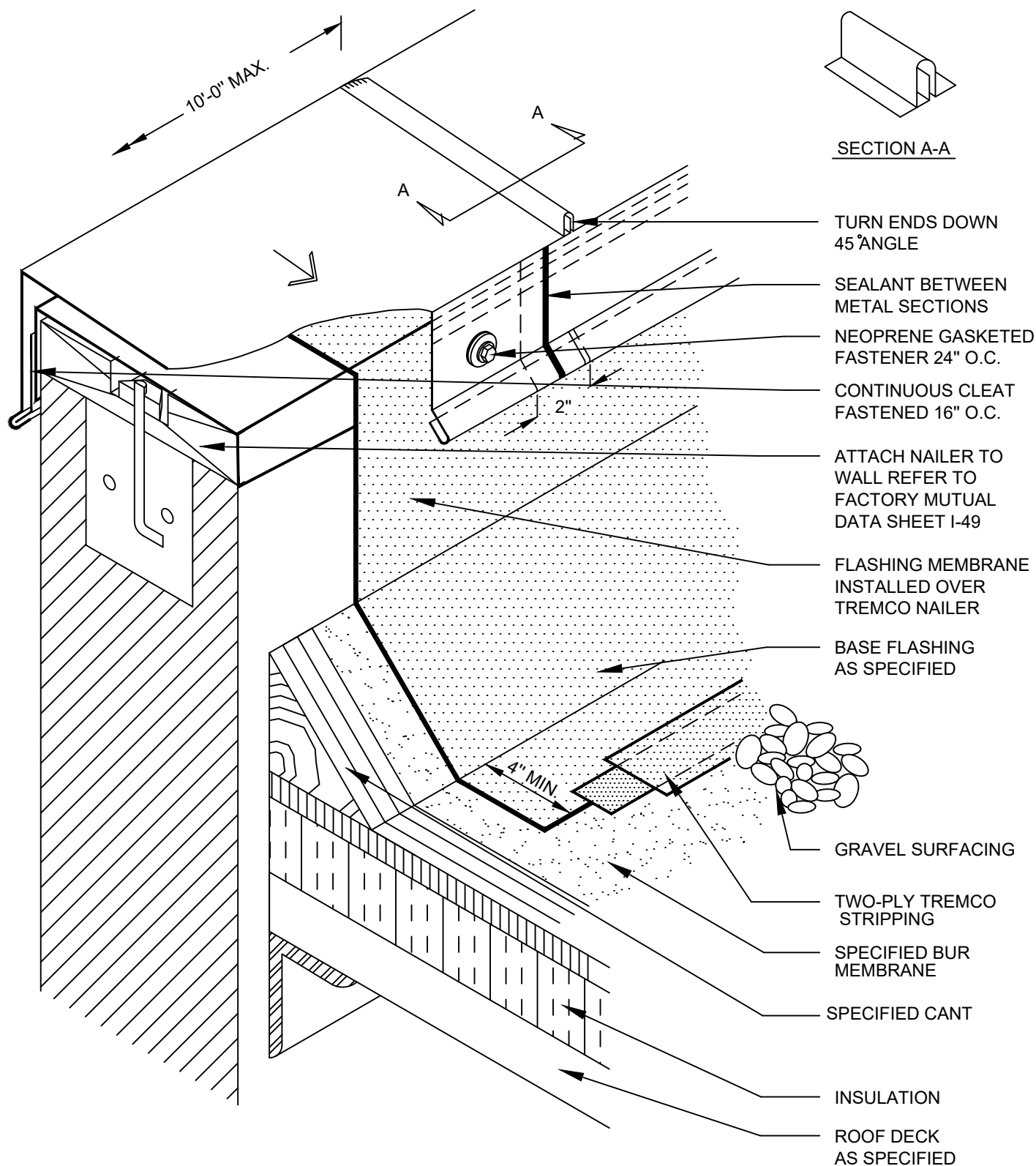
DWG NO. 35

N.T.S.





SECTION A-A

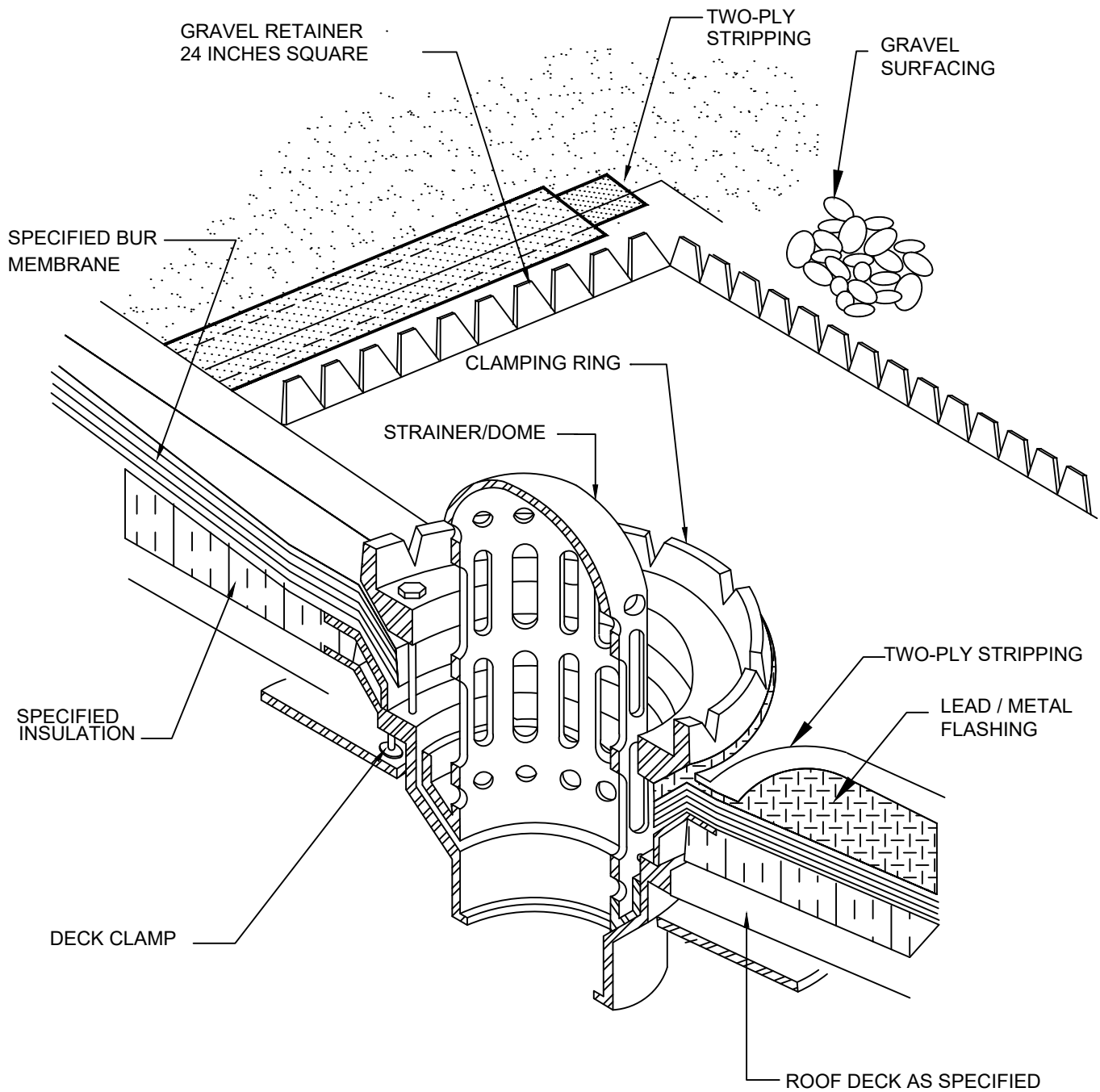


BUILT UP ROOFING
HOT/COLD LIGHT METAL PARAPET CAP

DWG NO. 36

N.T.S.

TREMCO
ROOFING & BUILDING MAINTENANCE

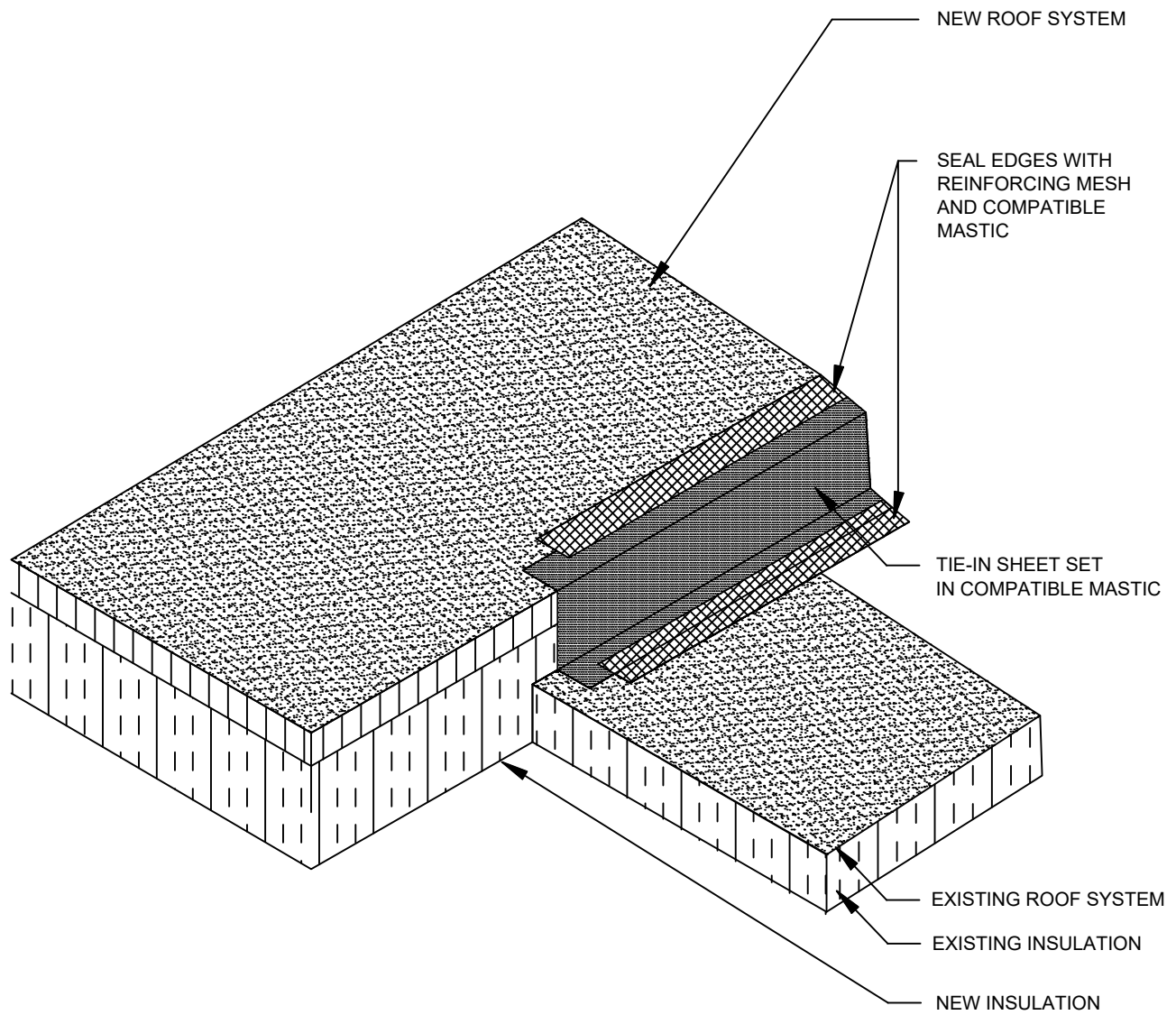


NOTES

1. PRIME ALL METAL SURFACES THAT WILL COME INTO CONTACT WITH ADHESIVES

BUILT UP ROOFING
HOT/COLD ROOF DRAIN WITH GRAVEL GUARD
DWG NO. 37 N.T.S.

TREMCO
ROOFING & BUILDING MAINTENANCE



NOTES

1. BEFORE NEXT DAY'S WORK, REMOVE TEMPORARY TIE-IN AND INSULATION FILLERS
2. EXTEND TIE-IN SHEET MINIMUM OF 6-INCHES ONTO BOTH SURFACES

ASPHALTIC ROOFING SYSTEMS
 DAILY WATERSTOP / TIE-IN
 DWG NO. 30A

N.T.S.

