



# **SENIOR PARENT MEETING**

**NOVEMBER 13TH  
2023**



**A GREAT START...**

# SCHOOL CULTURE & CLIMATE

Breakfast Party Patrol

Friday Fun Days

Building-Wide Challenges

Dean's List (Pancake Breakfast)



# Weekly Rhythms and Routines

## Fun Fridays

Student Connections

Sing for Smoothies

Horse-racing for Kentucky Derby

Super Bowl tailgate and football games

Limbo

Fishing

Earth Day trivia with Dirt cake parfaits

March Madness match-ups

Cornhole Challenge

Basketball Shooting Content



# REMINDERS

Students are required to have a valid student ID with them when entering the building. Students are asked to sign-in every morning they don't have an ID. If a student does not have his/her ID three times, a new one will automatically be printed. Replacement ID cards cost \$5.



# BACKPACKS

- Backpacks/string bags/purses large enough to hold a notebook are not permitted
- Students must use lockers throughout the school day



# ATTENDANCE

---

Students are allowed 10 absences each semester

---

Turn documentation into the Dean's office for medical absences

---

Call in when your student is absent – to North and Pankow

---

If an attendance appeal is needed, credit is not reinstated until the completion of the following semester

---

No LCN sponsored skip days!

# SENIOR INCENTIVES

Attendance incentives 2nd semester



# Building Exits



During the school day, students **MUST** exit the building through the main entrance located in the commons. Leaving the building through other doors is not permitted.

## **ARRIVAL AND DEPARTURE REMINDERS**

Students are expected to leave the building at the end of the school day. If students are participating in an after school activity, they should be supervised by the coach or sponsor of the activity.



# SPRING BREAK

Mark your calendars:

Spring break is earlier this year!

March 25-29; School resumes on April 1st



# CRU CARDS

Crusader Cards represent a system for recognizing and rewarding students as they pursue excellence and growth.

## CRUSADER CARDS

### Academic

All As	1 point
All As and Bs	1 point
No Ds or Fs	1 point
Passing every class in Q1 (changes to every exam in Q2)	1 point

### Attendance

4 or less absences in every class	1 point
No more than 2 total tardies	1 point

### Behavior

No Suspensions	1 point
No Detentions or Discipline Referrals	1 point

### Bonus Point 1 point

Honors or AP class in Q1 (changes to .5 GPA increase for Q2)	
Teacher Shout Out	
PRIDE card	

# CRU CARDS

## REWARDS

Here are some examples of the incentives and rewards you can earn. The type of reward and number of incentives will vary with each card level. For example, someone with a gold card will earn all the incentives connected to the other cards, plus additional ones.

Leave 6th Hour 1 Minute Early

Front of the Lunch Line Pass

School Store Discount Coupon

Tardy Pass

Homework Pass

Grab & Go Treat

Special Seating at School Event

Local Business Treat/Discount

# WINTER WISHES



## Winter Wishes



Name: \_\_\_\_\_

Grade: \_\_\_\_\_ 4<sup>th</sup> hour room # \_\_\_\_\_

Wish:

\_\_\_\_\_  
\_\_\_\_\_  
\_\_\_\_\_

Should the wish be granted in class? \_\_\_\_\_ Or privately? \_\_\_\_\_

[There's no guarantee your wish will be granted, but we hope to grant as many as possible. Please only submit serious wishes. This is your chance to spread a little holiday cheer or share a wish for yourself!]

# GET INVOLVED

## CLUBS AND ACTIVITIES

E-Sports

DECA

Student Council

Crusader Nation Theatre

Trap Team

United Nations

Book Club

Key Club

Diversity Club

Wellness Activities

Photography Club

Fishing Club

Science Olympiad

Craft and Cooking Club

Green Club

Link Crew

NHS

Youth for Christ

Archery Team

Chess Club

Fitness Group

## WINTER SPORTS

Basketball (boys)

Cheerleading

Wrestling

Basketball (girls)

Dance

Swim (boys)

Hockey

Bowling

# MENTAL HEALTH SUPPORT

Sensory Room

Counselor Appointments

Schoology Resource Page

Macomb Family Services

School Social Workers

CARE

Advisory



# GRADUATION REQUIREMENTS

- 22 total credits
  - 4 English
  - 4 Math
  - 3 Science (Biology, Chemistry or Physics or Horticulture or Anatomy)
  - 3 Social Studies
  - 2 World Language
  - 1 PE/Health
  - 1 Visual Performing Arts

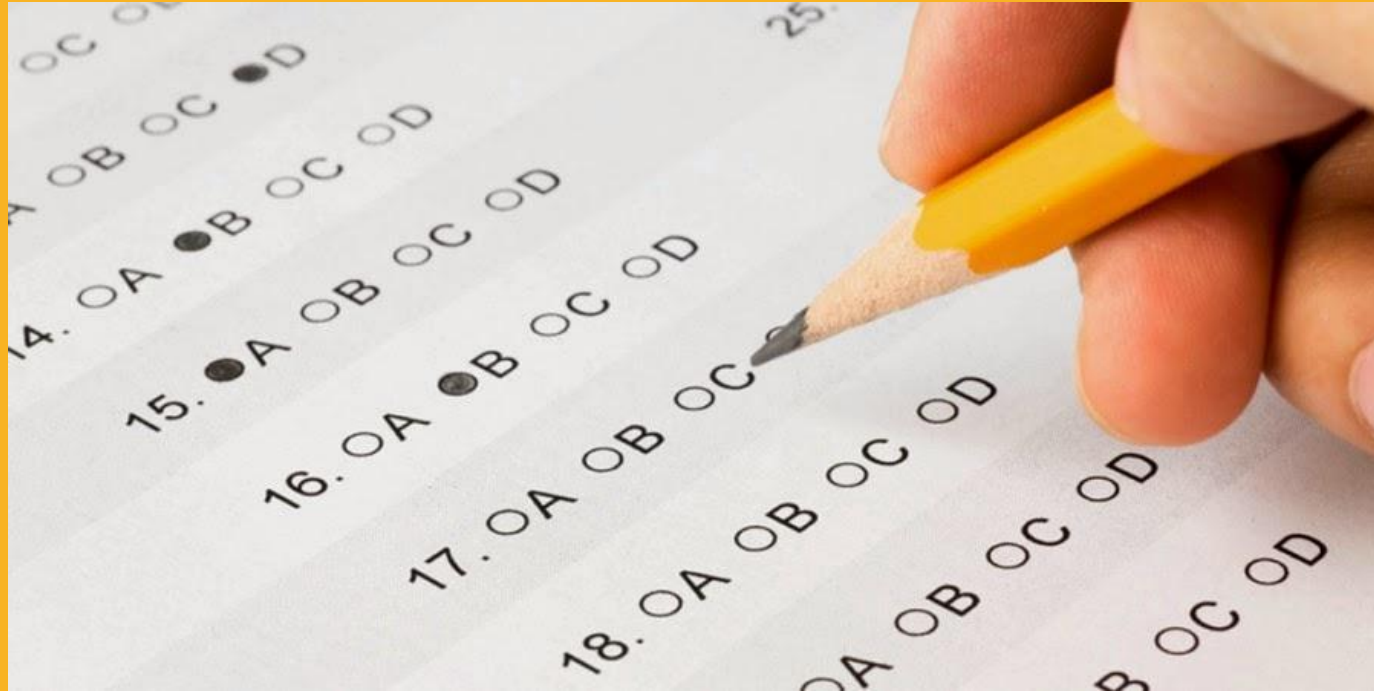


# ADDITIONAL REQUIREMENTS

- 30 hours Community Service
- Final Reflection
- Completion of SAT/Work Keys/M-Step
  - Students that didn't complete as a junior will need to this spring.



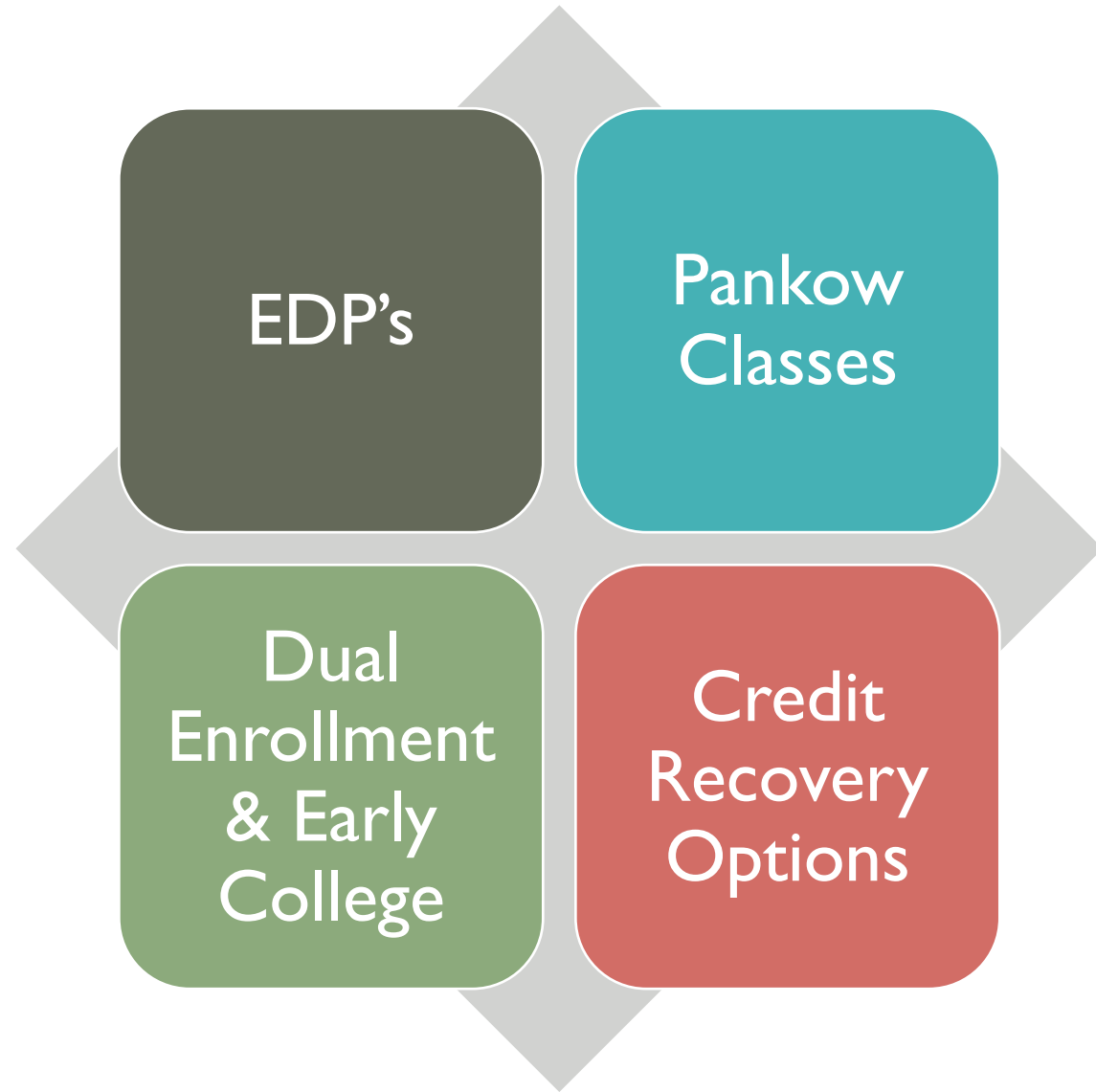
# TESTING FOR SENIORS



**NWEA** MULTIPLE TIMES THROUGHOUT THE YEAR

**\*\*MUST ATTEND SCHOOL ON PSAT/SAT TESTING DAYS \*\***

# PLANNING FOR THE FUTURE



# COLLEGE AND CAREER PLANNING

A. College: Applications can be filled out the summer of the student's senior year)

B. Trade Schools: Research and reach out to them for specific program offerings

C. Apprenticeships: Research and reach out to them for more information.

D. Military: Talk with representatives and research what each branch has to offer.

E. Work force: Determine if additional education will be needed for advancement

# EXTRA SUPPORT

Math Tutoring on Tuesdays

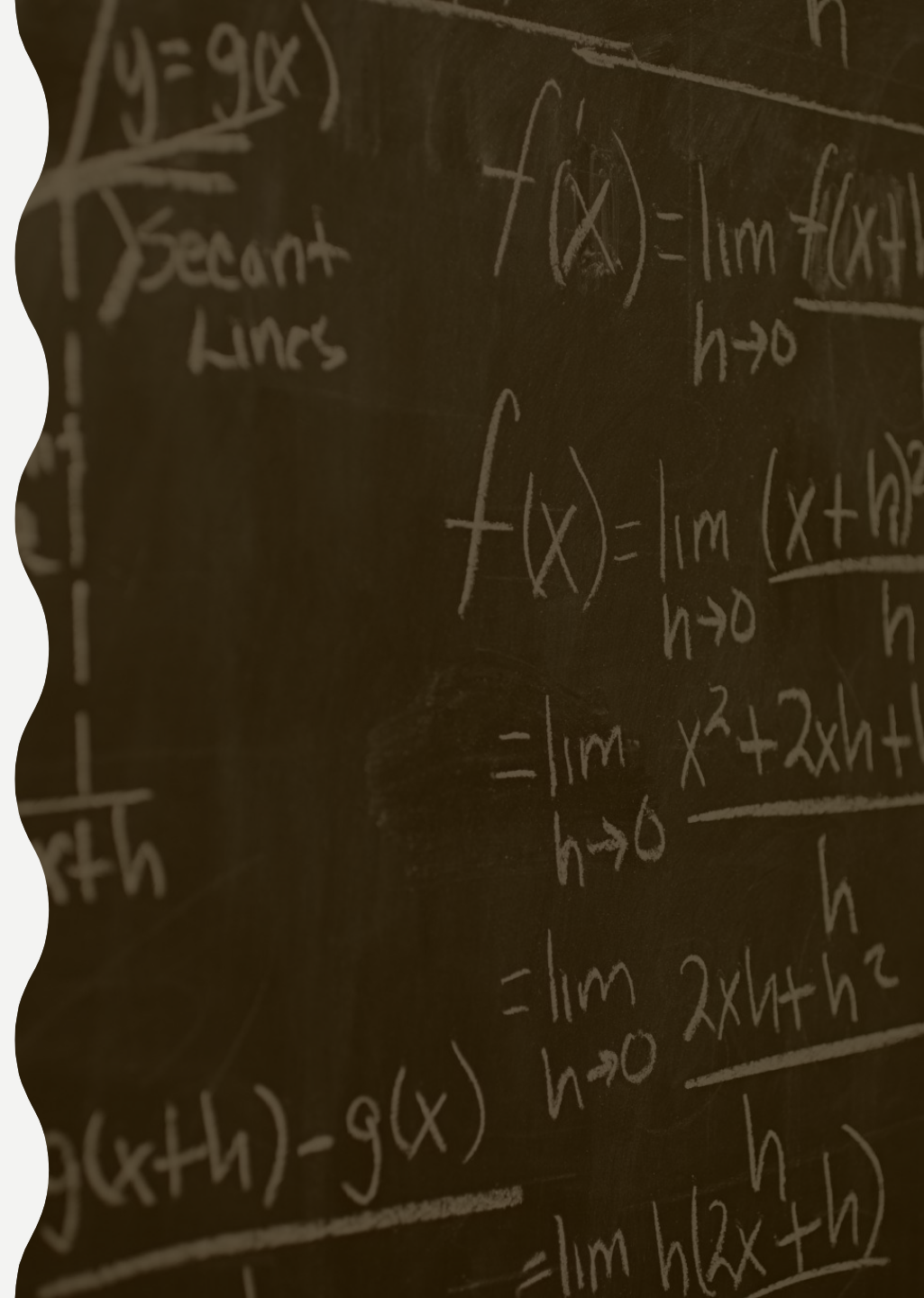
Room 106

Math Tutoring on Wednesdays

Media Center

NHS Tutoring on Tuesdays and Wednesdays

During Lunch in 142 ½



# GRADING

Teacher gradebooks are set up using two categories. One of them will reflect activities where students are required to show mastery of specific standards and learning objectives. The other category reflects the students' completion and practice toward mastery.

## SAMPLE:

Assessments	80%
Assignments	20%

# GRADE POINT AVERAGES

**\*\* ONLY ONE  
VALEDICTORIAN  
THIS YEAR**

A student's GPA is calculated on the 4.0 grade scale as follows:

- (1) Assign the points to each student's letter grade using the chart on the left below.
- (2) Add the total number of points warranted for each grade on the report card, and divide that by the total number of grades given.
- (3) Divide that figure by 3 to arrive at a GPA on the 4.0 scale.

An example for a student who took six classes in a typical semester is provided on the right below.

Letter Grade	Points
A+	12
A	12
A-	11
B+	10
B	9
B-	8
C+	7
C	6
C-	5
D+	4
D	3
D-	2
F	0

Example:

Letter Grade	Points
A	12
B	9
C+	7
B	9
C	6
B-	8
<b>Total Points</b>	<b>51</b>

$$51 \div 6 = 8.50$$
$$8.50 \div 3 = 2.83$$

Sem. GPA = 2.83



# RESOURCES

## College and Career Planning

<https://bigfuture.collegeboard.org>

## Financial Aid

<https://fafsa.ed.gov/>



# TRANSCRIPTS



## L'Anse Creuse High School - North

### Counseling Office

- SAT, PSAT 9 & 10, NMSQT, ACT and M-Step Resources
- AP Testing
- Study/Test Taking Tips
- Tutoring Information
- ➔ Transcripts / Records
- Get Ready for College
- Career and College Exploration
- College Visits/College Fairs
- Financial Aid for College
- Scholarships
- Graduation Requirements
- Parent/Family Community Resources
- Military Branches
- Mental Health

### Transcripts / Records

#### PARCHMENT

High School North Records Clerk - Ms. Shawna Waters 586-493-5270 ext. 1221

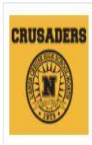
L'Anse Creuse High School has partnered with Parchment to order and send your transcript and other credentials securely.

To request your transcripts please [click here](#).

#### [Parchment Help/FAQ](#)

To access other record information such as immunization records, test scores, report cards, fill out the [Transcript Request Form](#). Please be sure to print and verify that all of the appropriate information is provided. Please be sure to state in the Reason Section the name of the scholarship if the request is for a scholarship. Also, please state the name of the college and contact information for where you are requesting the transcript to be sent. Lastly, also include your contact information in case there are any questions that need to be addressed.

## L'ANSE CREUSE HIGH SCHOOL - NORTH



### L'Anse Creuse High School North

23700 21 Mile Rd, Macomb, MI 48042-5106



Existing User Account



OR New Learner Account



OR New Third Party Account

# SENIOR HONORS PROJECT

A multi-week experience in a job setting. Students find a placement with a business or organization where they explore areas of interest and extend their learning beyond the classroom. Students will gain unique experience, strengthen content knowledge, build professional contacts, and develop interpersonal skills.

## Requirements:

Overall GPA of 3.0 or higher

Teacher recommendations

Approved proposal

Professional Placement

# POWERSCHOOL

Students and parents can check PowerSchool for updated information about grades and attendance. If you need help accessing your PowerSchool account, please contact Mrs. Forrey in the main office.



# SCHOOLGY

- In order to access Schoology parent access, all parents/guardians will need to register for a Schoology account using the Parent Access Code received for their child. If you did not receive your Schoology Parent Access Code, please reach out to your child's teacher. While Schoology is able to be utilized in all browsers, it does tend to work most smoothly in Chrome.

To sign-up for a Schoology parent account:

Go to [www.schoology.com](http://www.schoology.com)

Click "Sign Up" at the top of the page and choose "Parent."

Enter your Parent Access Code: a 12-digit code in xxxx-xxxx-xxxx format you will receive.

Fill out the form with your information.

Click "Register" to complete.

- When you use a Parent Access Code to create an account, you are automatically associated to your child. Parent Access Codes are unique to each student, but can be used to make multiple parent accounts. You can also add additional children to your account using the "Add Child" button.

# TECHNOLOGY SUPPORT

Students are responsible for having their Chromebooks daily and ensuring they are charged. Live chats for tech help are available.

The screenshot shows the L'Anse Creuse Public Schools website. At the top is the school district logo and a navigation menu with links for 'For Staff', 'For Students', 'Community Education', 'COVID-19', 'Enrollment', and 'Employment'. Below this is a secondary navigation bar with links for 'OUR DISTRICT', 'DEPARTMENTS', 'PROGRAMS', 'BOARD OF EDUCATION', 'COMMUNITY', 'PARENTS', and 'SCHOOLS'. The 'DEPARTMENTS' link is highlighted in yellow. The main content area is divided into two columns. The left column has a 'Need Help?' button and a 'Departments' list with 'Technology Support' selected. Below this is 'CONTACT INFORMATION FOR STUDENTS/GUARDIANS' with a 'Live Chat' section and an email address: [techsupport@lc-ps.org](mailto:techsupport@lc-ps.org). The right column has a 'Technology Support Services' heading, a paragraph about technology's role in education, and three blue expandable buttons: 'GETTING CONNECTED AT HOME', 'DISCOVERY EDUCATION', and 'EDMENTUM COURSEWARE'. Each button has a white plus sign on the right.

Need Help?



[For Staff](#) [For Students](#) [Community Education](#) [COVID-19](#) [Enrollment](#) [Employment](#)

[OUR DISTRICT](#) [DEPARTMENTS](#) [PROGRAMS](#) [BOARD OF EDUCATION](#) [COMMUNITY](#) [PARENTS](#) [SCHOOLS](#)

## Departments

- Business Office
- Curriculum
- Food & Nutrition Services
- Human Resources
- Special Education
- Student & Information Services
- Superintendent's Office
- [Technology Support](#)
- Transportation

## CONTACT INFORMATION FOR STUDENTS/GUARDIANS

Live Chat:  
Click "Need Help?" to chat with us Monday through Friday from 7:00 A.M. to 4:00 P.M.  
Email: [techsupport@lc-ps.org](mailto:techsupport@lc-ps.org)

## Technology Support Services

L'Anse Creuse Public Schools believes that technology will support and enhance instruction. Technology should make the workplace more efficient and effective. Technology shall be used to increase communication with students, parents, staff, and the community. Lastly, technology will be used to increase the security and safety of students and staff.

[GETTING CONNECTED AT HOME](#)

## STUDENT ONLINE LEARNING INFORMATION

L'Anse Creuse offers several online learning options for students in K-12. The information in this section explains how to access each of these programs. While all options are available to L'Anse Creuse students, you should check with your teacher to see how they are delivering your lesson plans and assignments. Additional online resources can be found on the ["For Students"](#) page of our website.

[DISCOVERY EDUCATION](#)

[EDMENTUM COURSEWARE](#)

# WHO DO I CONTACT IF I HAVE A QUESTION ABOUT...

## Attendance

**Melissa Vaughn**  
Dean's Office  
[vaughme@lc-ps.org](mailto:vaughme@lc-ps.org)  
Ext. 1270

## Community Service

**Carol Hosler**  
Media Center  
[hosleca@lc-ps.org](mailto:hosleca@lc-ps.org)  
Ext. 1230

## Grades and/or Assignments

**Individual Teacher**

## Honor Roll and Student Discipline

**Michael Poljanac**  
Dean's Office  
[poljami@lc-ps.org](mailto:poljami@lc-ps.org)  
Ext. 1204

## Graduation Progress/College and Career Planning/Personal Issues

### Counselor

A-De	Megan Jasina	<a href="mailto:jasinme@lc-ps.org">jasinme@lc-ps.org</a>	ext. 1209
Di-J	Eileen Clark	<a href="mailto:clarkei@lc-ps.org">clarkei@lc-ps.org</a>	ext. 1216
K-M	Deb Wheeler	<a href="mailto:wheelde@lc-ps.org">wheelde@lc-ps.org</a>	ext. 1228
N-Sh	Danielle Kelly	<a href="mailto:kellyda@lc-ps.org">kellyda@lc-ps.org</a>	ext. 1206
Si-Z	Tamara Camaj	<a href="mailto:camajta@lc-ps.org">camajta@lc-ps.org</a>	ext. 1222

### Associate Principal A-L

**Nick Ellul** [ellulni@lc-ps.org](mailto:ellulni@lc-ps.org) ext. 1211

### Associate Principal M-Z

**Melissa Chase** [chaseme@lc-ps.org](mailto:chaseme@lc-ps.org) ext. 1212

### Principal

**Meredith Beard** [beardme@lc-ps.org](mailto:beardme@lc-ps.org) ext. 1210

# IMPORTANT DATES

Prom: May 17<sup>th</sup>

Last Day of School: May 23<sup>rd</sup>

Graduation: June 4<sup>th</sup>



# SENIOR CONTACTS

- Yearbooks Ms. Sanders [sandele@lc-ps.org](mailto:sandele@lc-ps.org)
- Senior Apparel Class Sponsors [scapime@lc-ps.org](mailto:scapime@lc-ps.org) or [wenzech@lc-ps.org](mailto:wenzech@lc-ps.org)
- Prom Class Sponsors [scapime@lc-ps.org](mailto:scapime@lc-ps.org) or [wenzech@lc-ps.org](mailto:wenzech@lc-ps.org)
- Senior Dues Class Sponsors [scapime@lc-ps.org](mailto:scapime@lc-ps.org) or Payschools
- Sunset/Raffle Class Sponsors [scapime@lc-ps.org](mailto:scapime@lc-ps.org) or [wenzech@lc-ps.org](mailto:wenzech@lc-ps.org)
- Fundraisers Class Sponsors [scapime@lc-ps.org](mailto:scapime@lc-ps.org) or [wenzech@lc-ps.org](mailto:wenzech@lc-ps.org)
- Transcripts/Records Mrs. Waters [watersh@lc-ps.org](mailto:watersh@lc-ps.org) or Parchment
- Cap and Gowns Jostens [Jostens](https://www.jostens.com) or 248-946-4670
- Senior BBQ/Last Day Main Office [bishopda@lc-ps.org](mailto:bishopda@lc-ps.org) or [beardme@lc-ps.org](mailto:beardme@lc-ps.org)
- Graduation Main Office [bishopda@lc-ps.org](mailto:bishopda@lc-ps.org) or [beardme@lc-ps.org](mailto:beardme@lc-ps.org)
- General Senior Info Main Office [bishopda@lc-ps.org](mailto:bishopda@lc-ps.org) or [chaseme@lc-ps.org](mailto:chaseme@lc-ps.org)



# L'Anse Creuse High School - North

## Students/Parents

- Calendar
- ➔ Class of 2024**
- Class of 2025
- Class of 2026
- Class of 2027
- Vaping and Substance Abuse Policies, Procedures, Forms
- Technology Help
- School Store
- Yearbook
- After School Support and Tutoring
- Parent Communications

## Class of 2024

### CLASS SPONSORS

Charlie Wenzel: [wenzech@lc-ps.org](mailto:wenzech@lc-ps.org)  
Melissa Scapini: [scapime@lc-ps.org](mailto:scapime@lc-ps.org)

### INFORMATION AND ANNOUNCEMENTS

- DATES AND DEADLINES**
- GRADUATION REQUIREMENTS**
- SENIOR CAP & GOWN**
- SENIOR DUES**
- SENIOR PAINTED PARKING**
- SENIOR PROUD PARENT AD**
- SENIOR PORTRAIT**

# STAY INFORMED

# STAY INFORMED

## WEEKLY NEWSLETTER



## FOLLOW US ON SOCIAL MEDIA

### Follow Us



@lansecreusenorthhs



lcn\_admin



@LAnseCreuseHSN



@lcn\_admin



**QUESTIONS?**



**THANK YOU FOR COMING!**